

**THE FOUNTAIN MUTUAL  
METROPOLITAN DISTRICT**

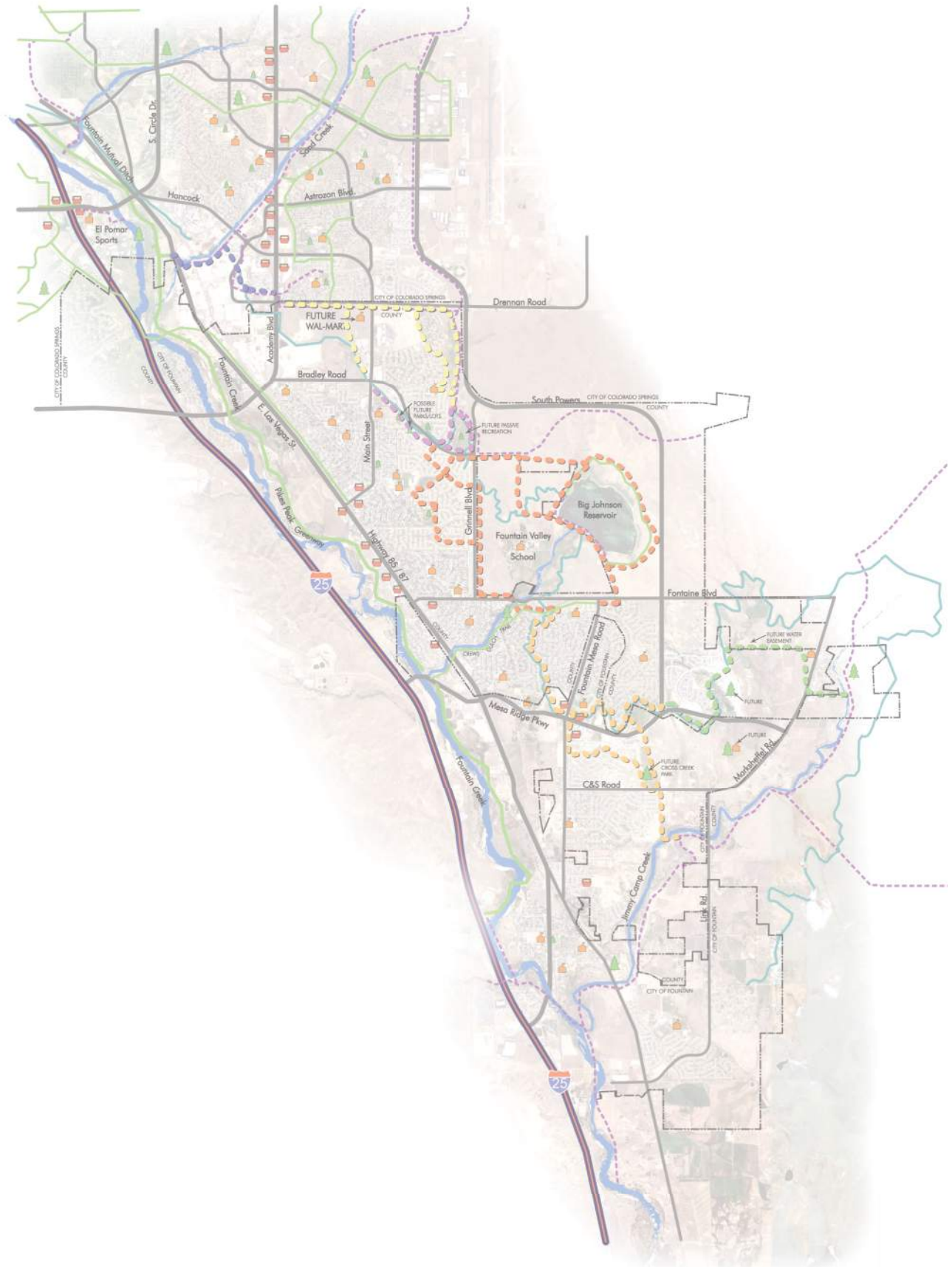
**F O U N T A I N**

**M U T U A L**

**T R A I L**

**CONCEPT PLAN UPDATE  
2021**

# Draft Trail Concept Plan Update



# CONTENTS

## **01 PAST, PRESENT & FUTURE PLANNING CONTEXT P.5**

History of the Project  
Introduction & Purpose of the Plan Update  
Plan Vision 2020  
Stakeholder identification & involvement  
Relationship to other Plans & Policies

## **02 TRAIL CORRIDOR CHARACTERISTICS P.17**

Completed & Proposed Trail Segments  
Trail Surface Tread  
Trail Access  
School Connectivity  
Municipal & County Trails  
Parks & Open Space Connectivity

## **03 GOALS & OBJECTIVES BY REACH P.25**

Reach A  
Reach B  
Reach C  
Reach D  
Reach E

## **04 OVERALL RECOMMENDATIONS P.47**

## **05 TRAIL DESIGN GUIDELINES P.53**

Trail Management & Operations  
User Groups  
Trail Standards  
Amenities & Trailheads  
Signage & Regulations

## **06 REFERENCES P.59**

This Page  
Intentionally Left Blank



**PAST, PRESENT  
& FUTURE  
PLANNING  
CONTEXT**

01

# HISTORY OF THE PROJECT

The original Fountain Mutual Trail Concept Plan was completed in 2008 for the Fountain Mutual Metropolitan District (FMMD) and created through a conceptual master planning process that explored the opportunities associated with the existing Fountain Mutual Irrigation Canal (FMIC) ditch system easements and right-of-way's.

Established in 1999, FMMD serves several small neighborhoods in southern El Paso County. FMMD functions include Parks and Recreation, as well as Stormwater management.

The FMIC has owned and operated the Fountain Mutual Canal irrigation system (Canal) since the late 1880's. The maintenance roads that parallel the Fountain Mutual Canal provide opportunities for trails or trail improvements adjacent to the canal within the noted corridor. In addition, the FMIC brings an extensive knowledge of the area in regards to landowners and easements that will be important to the future of the Fountain Mutual Trail (Trail).

The original 2008 Concept Plan was envisioned to foster greater interest in the community trail system, partnership opportunities and illustrate the role that the FMMD, in cooperation with FMIC, can play in enhancing the future recreation services within the communities of Fountain, Widefield, Security, Colorado Springs and El Paso County.

Because considerable development has taken place in the intervening years, and neighboring Municipal and County Parks Departments have updated their trail and parks master plans, the Concept Plan is in need of an update. N.E.S. Inc. and Drexel, Barrell & Co. were engaged by the Elise Bergsten, District Manager, for the FMMD to update the Concept Plan.

# THE CONSULTANT TEAM



## PROJECT LEAD, PLANNING & LANDSCAPE ARCHITECTURE

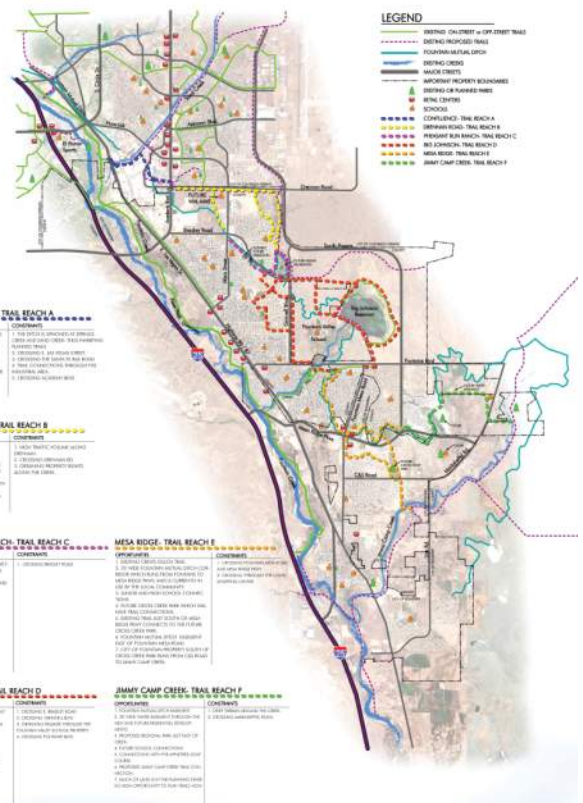
Christian Lieber  
Jon Romero  
Bryn Iten



## SITE SURVEY & ENGINEERING

Tim D. McConnell  
Patrick C. O'Hearn

2008  
Fountain  
Mutual  
Trail  
Concept  
Plan



Concept Plan  
Fountain Mutual Trail

# INTRODUCTION & PURPOSE OF THE UPDATE

---

The FMMD has employed a unique approach in their scope that looks beyond the limits of their Metropolitan District Service Areas to create meaningful connections to existing and proposed municipal and county trails, parks, schools and neighborhoods.

The original 2008 Trail Concept Plan evaluated a preliminary corridor for a multi-use trail system. The intended trail system aimed to support connections between area recreation facilities, community services, individual adjacent neighborhoods and multi jurisdictional trail connections with the City of Colorado Springs, Fountain, Widefield, Security and El Paso County.

The proposed alignment began near the Las Vegas Street water treatment plant traveling to the Big Johnson Reservoir to the Jimmy Camp Creek drainage to the south of the Canal system. The 2008 Trail Concept Plan envisioned fostering greater interest in the community trail system, partnership opportunities and illustrating the role that the FMMD, in cooperation with FMIC, can play in enhancing the future recreation services within the community.

The Fountain Mutual Trail Concept Plan Update (Plan) supports the original 2008 Concept Plan and develops the future vision and identity of the Fountain Mutual Trail (FMT) corridor while serving to streamline implementation for regional and local trails through meaningful partnerships with other local agendas. The Plan is intended to serve as a long-term guiding document for the Trail and establish

the preferred Trail corridor. The Plan is also intended to be a resource document and guide for the Trail that reflects the common interests and goals of the FMMD, stakeholders and the community.

Linking communities with trails and greenways is an important component of the Front Range urban fabric and the original 2008 Concept Plan.

This Plan provides a framework and tool set for the Fountain Mutual Metropolitan District (FMMD) in cooperation with the Fountain Mutual Irrigation Company (FMIC) and local municipalities to provide new and enhanced recreational and mobility opportunities to individuals within the Metropolitan District and surrounding communities of Colorado Springs, El Paso County and Fountain.

The Fountain Mutual Trail (Trail) promises to be a highly valuable asset to the Colorado Springs, El Paso County and Fountain communities for transportation, recreation and education. Implementation of this approximately 34 mile trail corridor will serve approximately 55,100 residents who live within a half mile of the corridor (per 2010 Census tract information). This Trail will provide greater transportation and access options to 26 Parks and Open Spaces, 16 schools, 37 Neighborhoods within a half mile and 23 connections to surrounding municipal trails.

This Plan establishes a set of design standards for the Trail and its associated spur trails within the context of existing physical constraints of the FMIC easements, Metropolitan Districts and public street rights-of-way. The Plan identifies planning issues and opportunities associated with Trail construction and presents feasible solutions for its design and long-term operation and maintenance.

This Plan document describes, in detailed terms, the proposed Trail corridor alignment, the organization of the Trail corridor into Reaches A through E and provides recommendations on implementation, partnership and funding strategies for their construction. This Plan is divided into six sections. The content of each section is as follows:

# PLAN SECTIONS

## 01

### Past, Present & Future Planning Context

This section briefly presents the history, vision, processes & partnerships involved in the FMMD's planning efforts for the Trail

## 02

### Trail Corridor Characteristics

This section provides a description of the Plan area with supporting analysis maps.

## 03

### Overall Recommendations

This section lists the Plan's overall recommendations for the Trail & identifies the five reach segments that make up the Trail

## 04

### Goals & Objectives By Reach

This section provides the framework around which the Plan will be implemented by Reach

## 05

### Trail Design Guidelines

This section establishes trail design guidelines, such as typical path construction & layout, wayfinding signage & road crossings

## 06

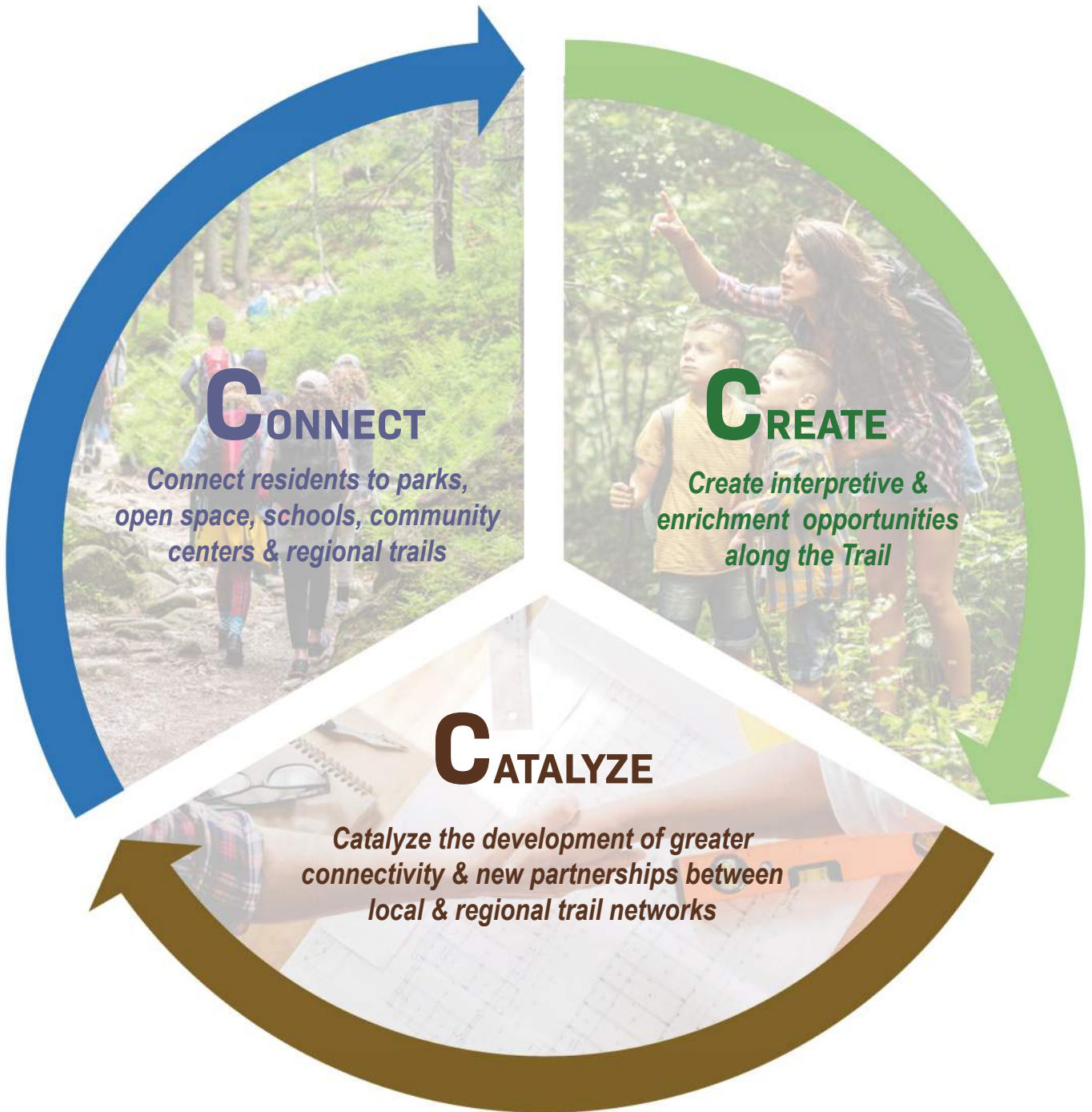
### References

The references will follow the Plan and list the documents reviewed in the preparation of this Plan



# 2021 VISION

*With the oversight and support of the Fountain Mutual Metropolitan District in cooperation with the Fountain Mutual Canal Irrigation Company the Fountain Mutual Trail will:*



# STAKEHOLDER IDENTIFICATION & INVOLVEMENT

A Stakeholder Meeting and Stakeholder Field Trip were held throughout the Plan process. The purpose of these Stakeholder events was to create an open dialogue to understand changes to Stakeholder land management strategies, Master Plans and operational needs since the completion of the original Fountain Mutual Trail Concept Plan and identify potential new challenges and opportunities to incorporate and consider during the process of updating the Plan.

The Project Team recognizes the following agencies and stakeholders for their significant commitment of time and energy towards this effort. The success of this Plan is a result of this commitment.

The Plan process was conducted in an open and transparent manner to the maximum extent possible. The process included a tiered level of engagement for review and input as materials were developed. Stakeholders were engaged in key decision points and milestones throughout the Plan process.

A diverse set of stakeholders represented interests in both the Trail and the regional nature of the project. This broad perspective encouraged a robust conversation about the vision for the Trail, guided discussions related to management and operations and helped establish overall design standards of the Trail.



## Stakeholders

Emily Duncan	Colorado Springs Parks, Recreation & Cultural Services
Tim Wolken	El Paso County Parks & Recreation
Ross Williams	El Paso County Parks & Recreation
Gary Steen	Fountain Mutual Irrigation Company
Elise Bergsten	Fountain Mutual Metropolitan District
Susan Davies	Trails & Open Space Coalition
Allen Beauchamp	Trails & Open Space Coalition
Ben Valdez	Former Widefield School District 3
Dennis Neal	Widefield School District 3





The Fountain Mutual Trail Concept Plan Update Stakeholder Meeting #1 - Photo by: N.E.S. Inc.

# STAKEHOLDER MEETING

The Stakeholder Meeting provided an opportunity for the Project Team to present an overview of the Fountain Mutual Trail Concept Plan to stakeholders. Widefield School District 3 Parks and Recreation provided the space for the first Stakeholder Meeting.

Following introductions and the presentation, the Project Team invited Stakeholders to share and discuss observations and ideas on updating the Plan.

Discussion and insights into the history of the area and the surrounding communities provided outreach strategies for Trail implementation and

potential Trail corridor alignment updates within the Plan.

Stakeholders' shared trail design standards and future City and County trail alignments that would set the framework to develop specific design standards for the Trail. Key Takeaways from the first Stakeholder Meeting are listed above.

## KEY TAKEAWAYS

1. *Gaps in the Trail service areas through established older neighborhoods could be a challenge as the infrastructure for trails was not included and retrofitting for trails can be difficult*
2. *Liability and safety where the Trail is proposed adjacent to the Fountain Mutual Irrigation Canal will be a coordinated effort between the FMMD and FMIC*
3. *The Trail should be primarily a soft surface trail to satisfy maintenance, cost, continuity with other trail systems, user needs and design considerations*
4. *Include additional trail connections to schools, parks and open spaces in the area, particularly a connection to the Big Johnson Reservoir trails*
5. *There are several proposed alignments for local and regional trails in close proximity to the proposed Trail corridor with opportunities for collaboration and partnership*
6. *Present the Plan to the El Paso County Parks Advisory Board, the City of Colorado Springs Parks Advisory Board, the Fountain Mutual Irrigation Board of Directors, the Fountain Mutual Metropolitan Board of Directors and the Widefield School District 3 Parks and Recreation Advisory Board.*
7. *Multi-jurisdictional trail master planning overlap was identified lending to increased collaboration opportunities for common long range improvement and connectivity goals*



Stakeholder Field Trip  
Photo by: Allen Beauchamp - T.O.S.C.

# STAKEHOLDER FIELD TRIP

After the Stakeholder meeting and discussions, support and interest in a field trip was expressed to evaluate a segment of the Trail corridor. The Project Team then scheduled a boots on the ground field trip for a segment of Reach E, which was identified early on by the Project Team as one of the initial key improvement areas within the corridor.

Reach E of the Trail corridor is identified by the Fountain Mutual Trail Concept Plan as roughly spanning from Fontaine Boulevard south and east to Jimmy Camp Creek.

## KEY TAKEAWAYS

1. *Where the Trail is adjacent to the FMIC a trail easement agreement should be drafted that assigns responsibilities for Trail maintenance*
2. *Utilize a Trail sign wayfinding program for all major intersections, signs could provide distances and arrows for locations or connection to other trails*
3. *A survey of the neighborhoods surrounding the proposed Trail corridor would be an opportunity to engage and educate the community*
4. *Get letters of support from area leadership, including Widefield District 3, Fountain Mutual Irrigation Company, El Paso County, City of Colorado Springs, Widefield Water and Sanitation District, Security Fire Protection District, and City of Fountain*
5. *Consider including lighting in the Trail Standards. Dark-sky lighting along the trail corridor would allow for trail use after dark, especially in winter months*
6. *Work with local municipalities to install crosswalks and warning signs where the proposed Trail corridor intersects with streets*
7. *Look to provide safe corridors to improve trail use and access to a variety of users.*

This field trip was an opportunity for Stakeholders to get better acquainted with the unique challenges and opportunities of Reach E and identify those areas along Reach E that will serve to inspire the shared vision for the Trail. Stakeholders' identified broader trends in potential trail standards and partnership strategies for the entire Trail.

Draft Trail Concept Plan Update



Stakeholder Field Trip  
Photo by: N.E.S. Inc.



Stakeholder Field Trip  
Photos by: Allen Beauchamp - T.O.S.C.

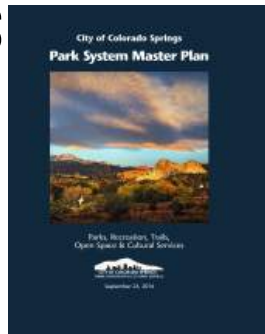
# RELATIONSHIP TO OTHER PLANS & POLICIES

---

Since the creation of the original Fountain Mutual Trail Concept Plan in 2008 the City of Colorado Springs, El Paso County and Widefield Parks and Recreation have developed parks master plans and constructed new trail segments in the vicinity of the Trail route. These new trail and park master plans present Trail corridor partnership opportunities and will help shape the route of the proposed Trail corridor.

## COLORADO SPRINGS PARK SYSTEM MASTER PLAN (2014)

---

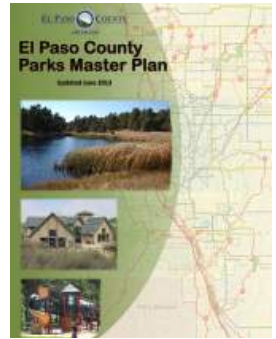


Linking trails and closing gaps to enhance connectivity were key recommendations of the Colorado Springs Park System Master Plan (COS Plan) that the Trail can play a key part in realizing. Expanding the trail system of Colorado Springs was identified as a top priority. The COS Plan shares common trail opportunities with the updated Fountain Mutual Trail Concept Plan.

The proposed Trail Corridor connects to existing Sand Creek and Fountain Creek trails and shares alignments with several other proposed and existing segments of Colorado Springs Trail network. Common shared segments include the connections to the Colorado Springs Airport and the trails around the Bluestem Prairie Open Space and Ring the Springs Loop. These partnership opportunities and connections are examined in more depth in Section 04 of this Plan.

## EL PASO COUNTY PARKS MASTER PLAN (2013)

---

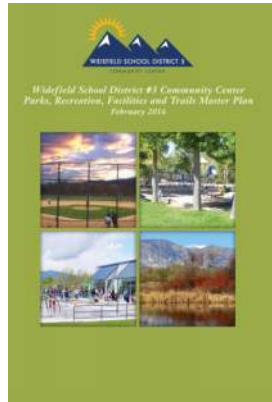


Meaningful connections to other trail networks is identified as a high priority in the El Paso County Parks Master Plan (EPC Plan) as a means to support the community's vision of over 700 miles of trails and bike routes in the long term. The EPC Plan identifies collaboration through partnerships with other agencies as a strategy for enhancing the parks and trails of El Paso County and utilizing these partnerships to seek out alternative funding.

The proposed Trail corridor connects to the existing El Paso County Crews Gulch and Fountain Creek trails and shares alignment with several proposed and existing segments of El Paso County trails in the Sand Creek, Front Range and Jimmy Camp Creek Trailshed areas as identified in the EPC Plan. These partnership opportunities and connections will be examined in more depth in Section 04 of this Plan.

# WSD 3 PARKS, RECREATION & TRAILS MASTER PLAN (2016)

---



The Widefield School District 3 Community Center, Parks, Recreation, Facilities and Trails Master Plan (WSD3 Plan) identified adding and expanding pathways and trails as a top priority.

Recommendations from the WSD3 Plan correlate with the FMMD Trail Master Plan and identify the need to create trail opportunities that connect parks and civic areas through partnerships and enhancing routes and wayfinding in the community. These recommendations from the WSD3 Plan present opportunities for the Trail and FMMD to work with Widefield School District 3 on increasing the connectivity and access to trails throughout the district. Partnership opportunities and connections will be examined in more depth in Section 04 of this Plan.

Space Reserved  
For Images

This Page  
Intentionally Left Blank



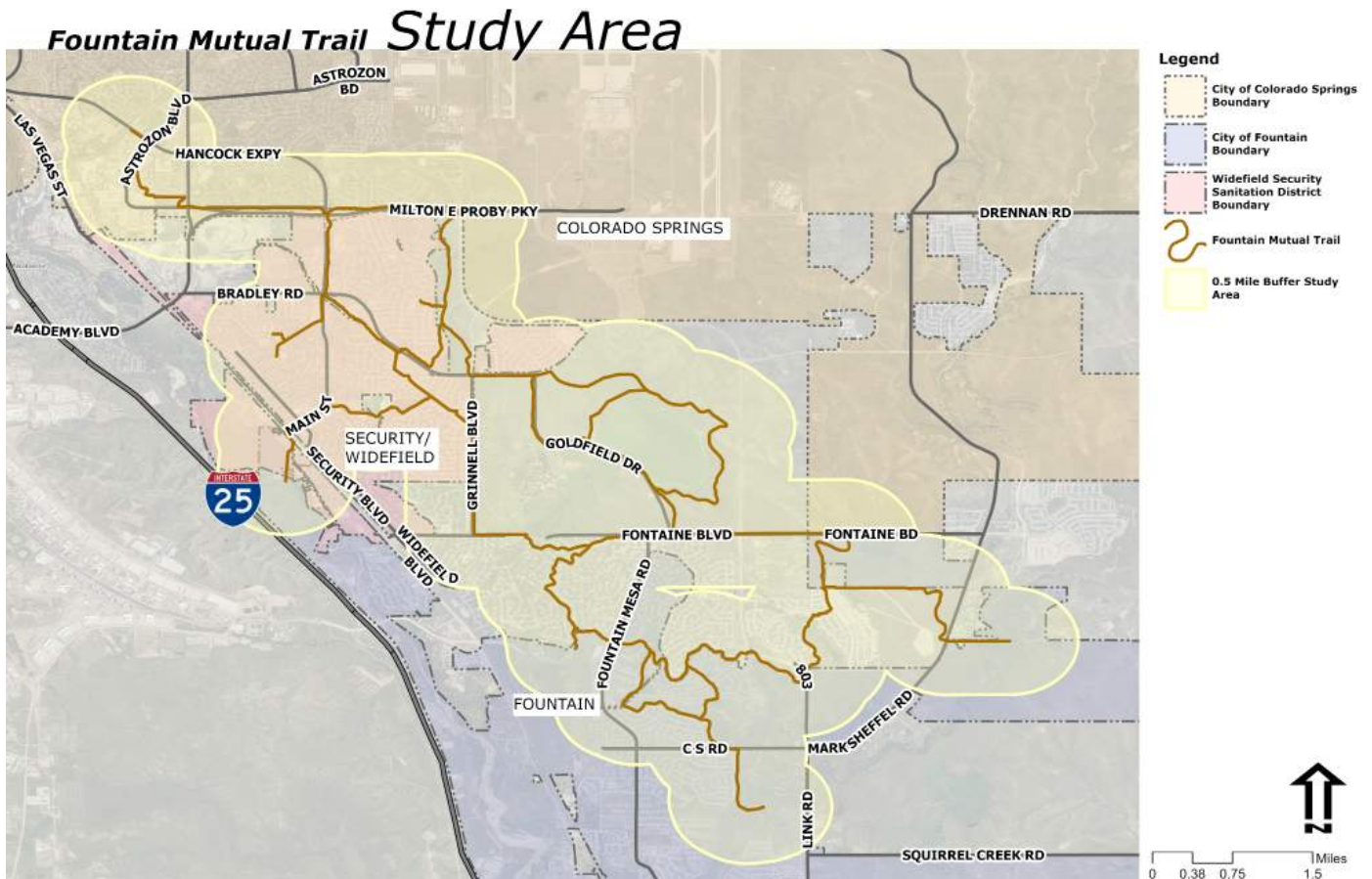


# **TRAIL CORRIDOR CHARACTERISTICS**

02

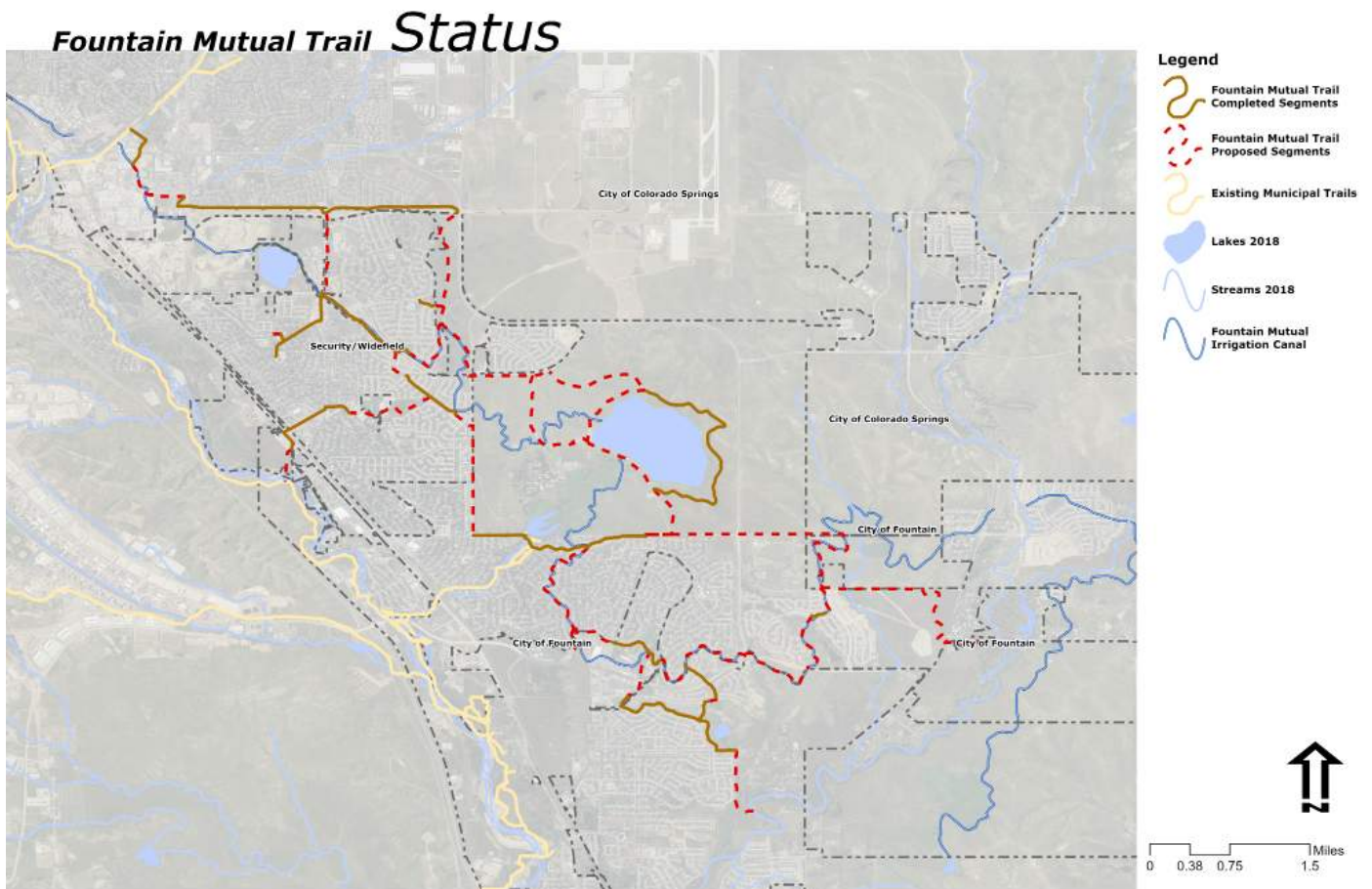
# THE STUDY AREA

The Trail Study Area is roughly a 0.5 mile buffer around the proposed network of Trail corridors. The 0.5 Mile or 10 minute walk buffer is a common standard for walkability and access. The Study Area includes parts of Colorado Springs, El Paso County, Fountain and Widefield/Security areas and is primarily composed of residential, parkland, institutional and commercial land uses. There is a diverse composition of neighborhoods from older established to in-progress developments within the Study Area. Approximately 55,100 El Paso County residents live within a half mile of the corridor (per 2010 Census tract information). Analysis of recent aerial photography and site visits were documented in ArcGIS to create and inventory community adjacencies related to access and connectivity, completed and proposed trail sections and even trail tread surfacing characteristics for completed segments of the Trail network. The focus of this section is to understand and examine those characteristics of the Study Area most relevant to the values and purpose for the Trail expressed by the Stakeholders, the FMMD and the FMIC.



# COMPLETED & PROPOSED TRAIL SEGMENTS

Approximately 12 miles or 35% of the Trail is complete and approximately 22 miles or 65% of the Trail remains to be completed and implemented. The completed segments of Trail include portions of existing municipal and county trails such as Crews Gulch and Bluestem Prairie. Additional segments of the completed trail are existing sidewalks in developed areas, schools and parks that the proposed Trail would connect into a larger trail system to expand the destination and route options for local residents.

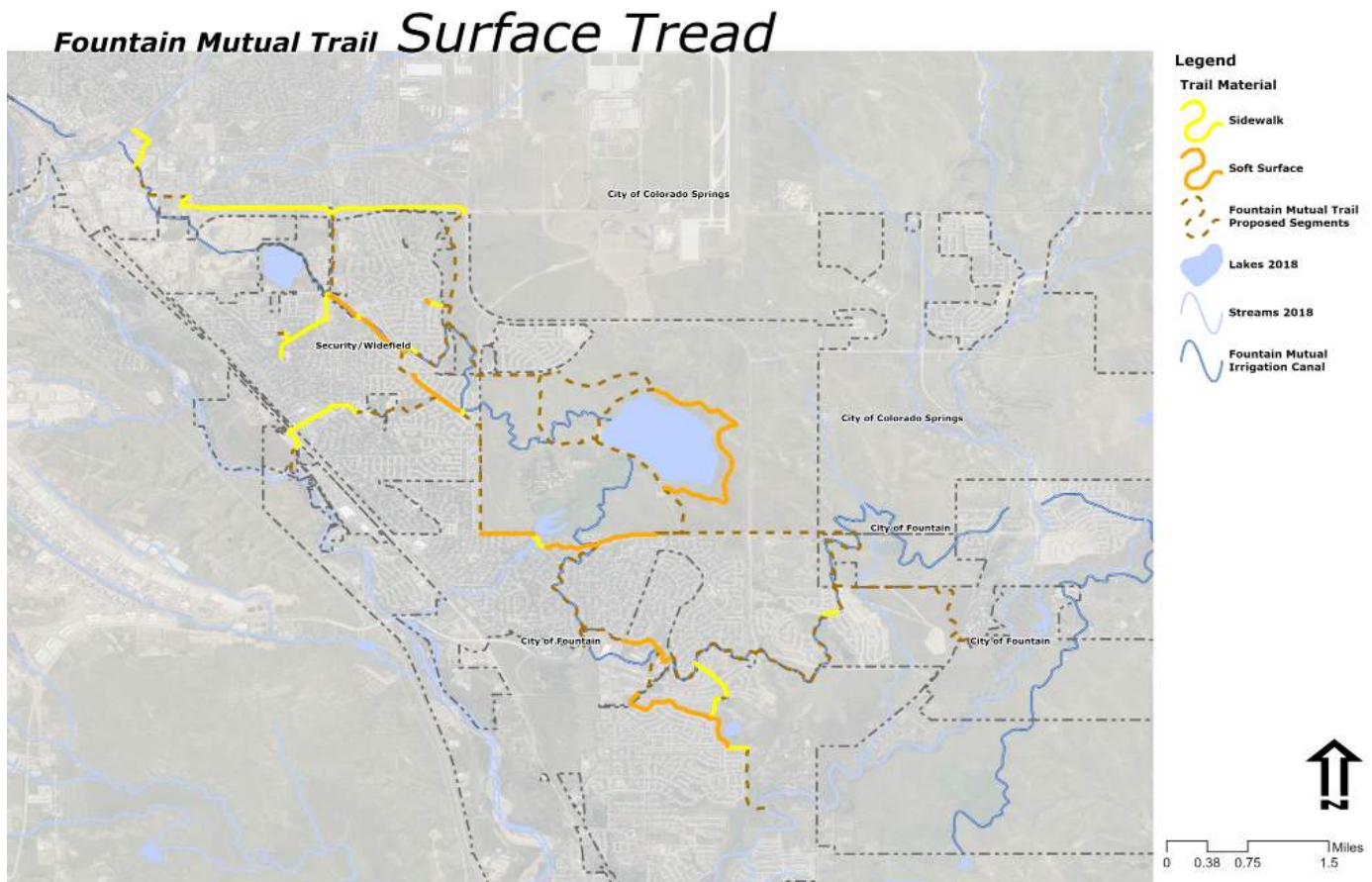


**MAP 2.1**

# TRAIL SURFACE

## TREAD

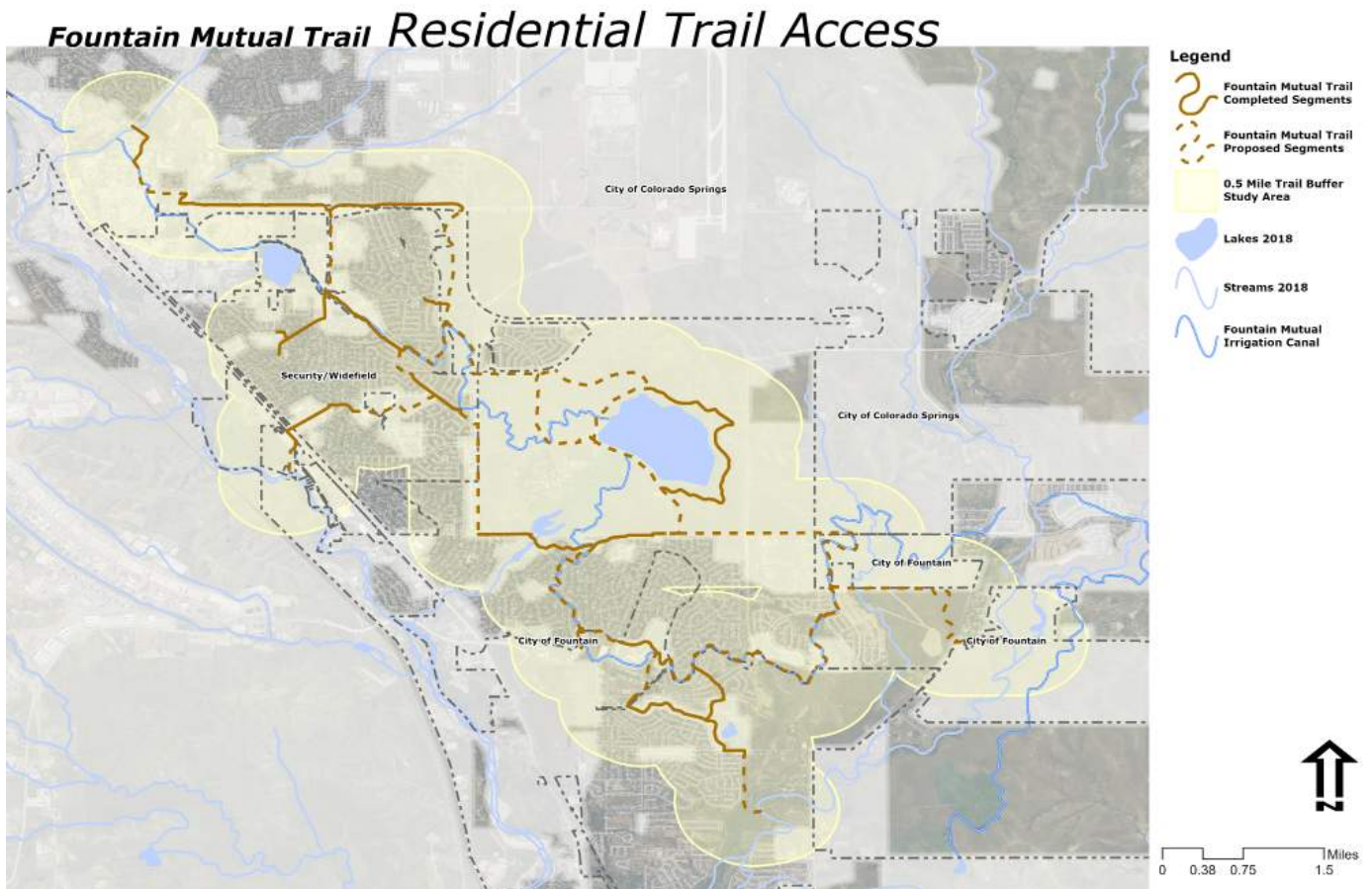
The completed Trail corridor is comprised of approximately: 5.5 miles (46%) Sidewalk and 6.5 miles (54%) Soft Surface. Sidewalks are comprised of a variety of widths and types. Existing concrete sidewalks range from attached 4 foot sidewalks in residential neighborhoods to detached 8 foot or larger sidewalks along streets such as Drennan Road. These segments of Trail are present in the more developed/urban settings along the Trail Corridor such as residential neighborhoods and along major streets. The soft surface sections of completed Trail are comprised of a variety of materials including decomposed granite and breeze. These segments of Trail are typically 4 to 6 feet in width and are present in the more natural settings along the Trail Corridor such as parks, schools or open space.



**MAP 2.2**

# TRAIL ACCESS

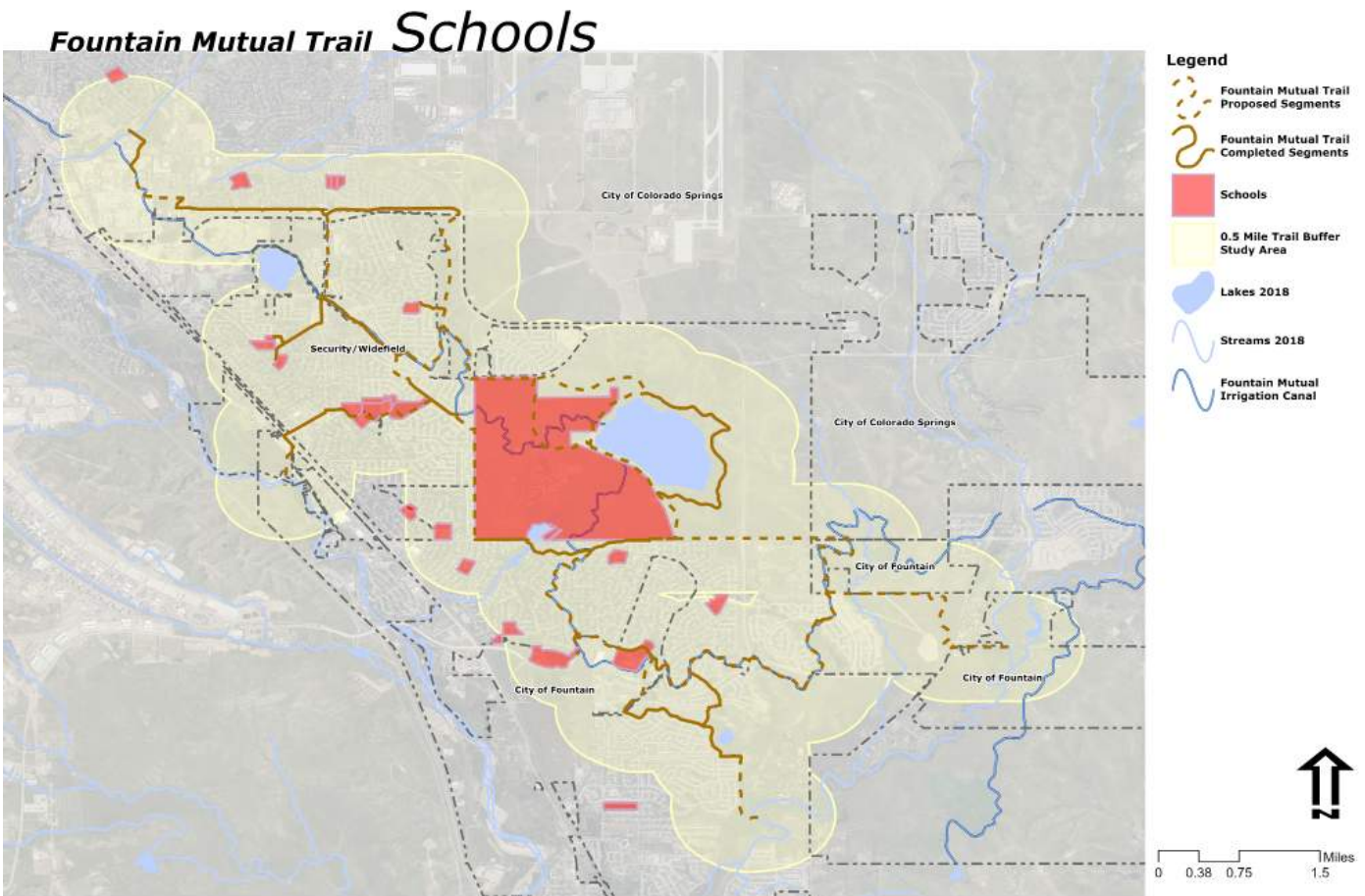
Gaps were identified in the existing trail network in residential areas within the Study Area. These Gaps are located in established neighborhoods within the southern portions of Widefield/Security and undeveloped or new development residential areas in the eastern portions of Fountain. Gaps in the Trail are opportunities for FMMD to engage with El Paso County and Colorado Springs Planning Departments to ensure corridor is set aside for trails through the land entitlement to close Gaps in the Trail. Proposed segments of Trail seek to close some of these gaps and connect existing segments of trail to improve connectivity and Trail access. Priority Trail connection projects are identified in Section 04 Goals and Objectives by Reach.



**MAP 2.3**

# SCHOOL CONNECTIVITY

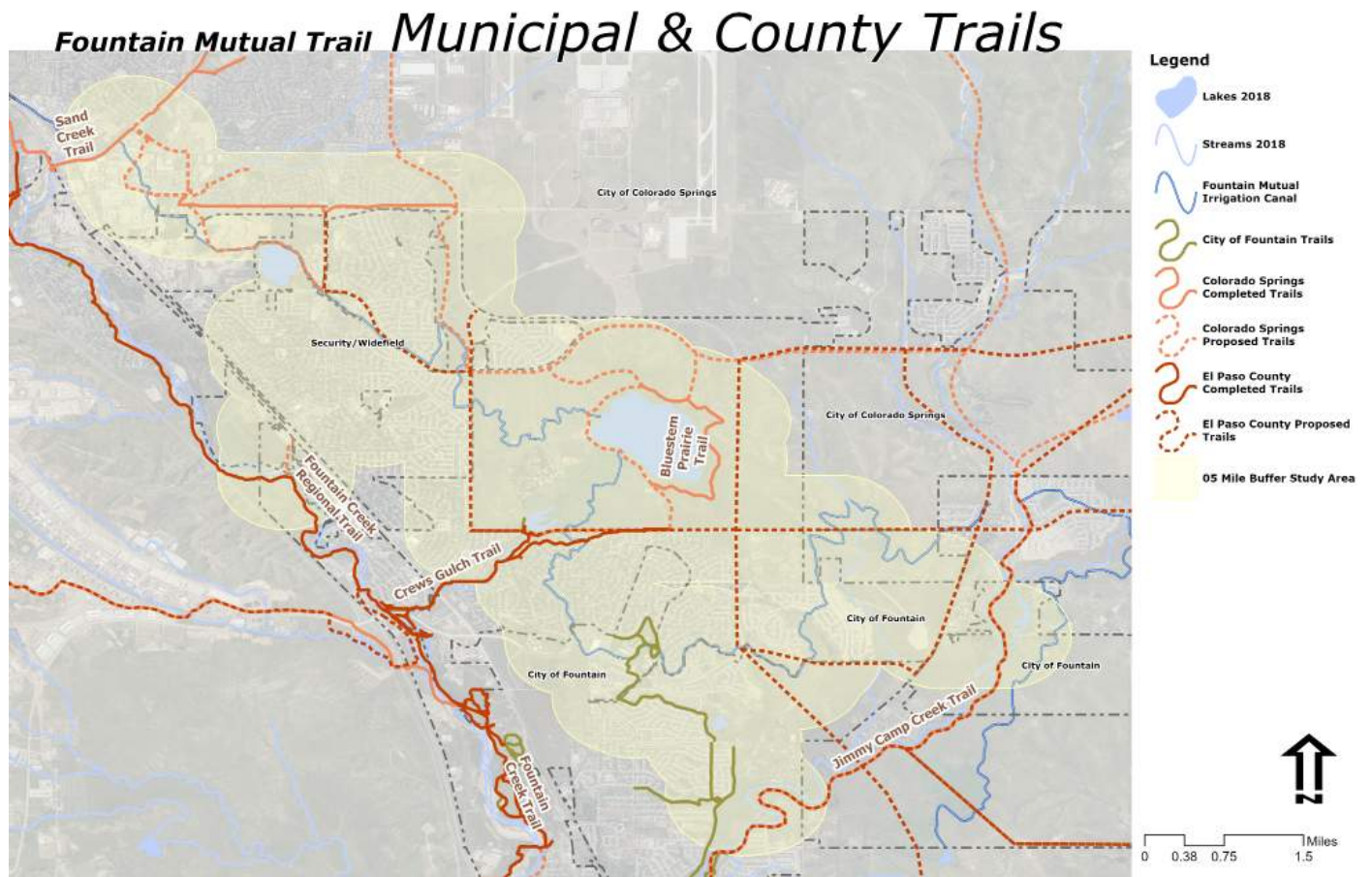
Providing connectivity to schools and parks is an important function of the Trail. There are 3 school districts and approximately 16 schools located in the Study Area. Access to Parks and Open Spaces via the Trail will provide outdoor education and recreation opportunities for the next generation of nature lovers and conservationists. Engagement and partnership opportunities with schools could provide a protected route for trips to parks, nature hikes along the riparian corridors and new routes for cross country teams and other athletics. The majority of the Trail is located within Widefield School District 3. Key schools along the Trail include Widefield Elementary of the Arts, Widefield High school, Fountain Valley School of Colorado, Mesa Ridge High school and Janitell Junior High school.



**MAP 2.4**

# MUNICIPAL & COUNTY TRAILS

There are several opportunities for partnership and shared alignments with existing and proposed Colorado Springs, Widefield/Security, Fountain and El Paso County Trails. These include Sand Creek, Fountain Creek, Jimmy Camp Creek and Crews Gulch. These partnership opportunities and connections will be examined in further detail in Section 04 Goals and Objectives by Reach of this Plan.



**MAP 2.5**

# PARKS & OPEN SPACE

## CONNECTIVITY

Parks and open spaces provide inclusive passive and active recreation opportunities for all ages. Providing convenient and comfortable pathways to these spaces is critical to ensuring they are utilized to their full potential. By improving residential trail access to parks within the study area the Trail strengthens the relationship to the parks and their many benefits into the everyday routines of the residents in the Study Area. Parks and open space are great travel destinations and often make great locations for trailheads. In the Study Area there are approximately 26 parks and open spaces owned and maintained by Colorado Springs, Widefield/Security, Fountain and El Paso County. Partnership opportunities and connections to parks and open spaces will be examined in further detail in Section 04 Goals and Objectives by Reach of this Plan.



**MAP 2.6**

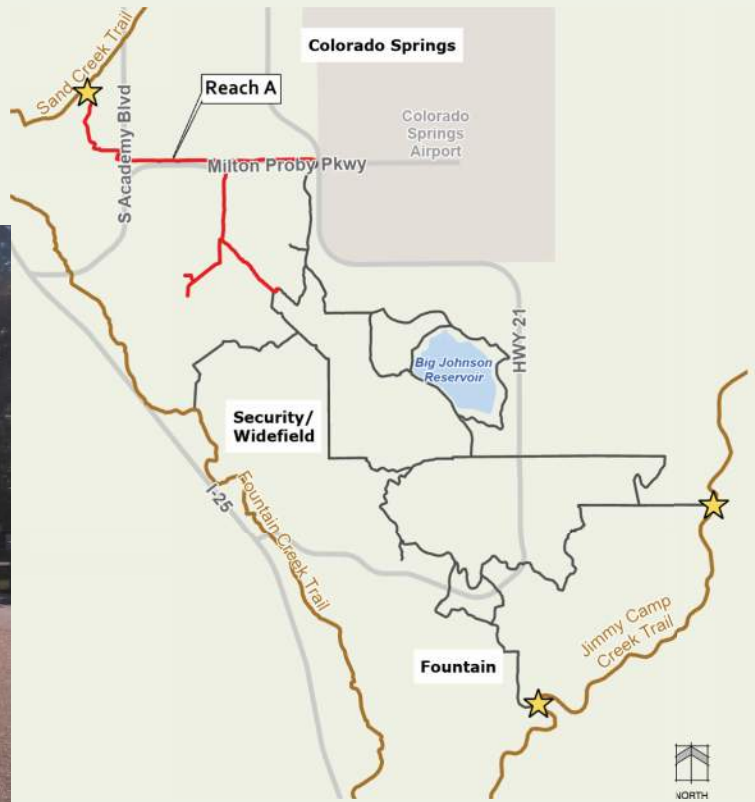




# GOALS & OBJECTIVES BY REACH

03

# REACH A



## Route

The updated Trail corridor for Reach A is a compilation of portions of Reach A and Reach B from the 2008 Concept Plan. Reach A starts at the terminus of the existing City of Colorado Springs Sand Creek Trail where it intersects the Hancock Expressway in south Colorado Springs. From this intersection Reach A follows along Hancock Expressway on an existing sidewalk before heading south on Astrozon Boulevard. At the intersection of the Fountain Mutual Irrigation Canal and Astrozon Boulevard Reach A leaves Astrozon Boulevard and the existing sidewalk and continues on the proposed route south along the canal.

Reach A follows along the canal and a concrete drainage channel south and east meeting up with existing sidewalk along Boychuck Avenue. At the intersection of Boychuck Avenue and Drennan Road, Reach A heads east on an existing sidewalk along the north side of Drennan Road crossing South Academy Boulevard and running parallel to Milton E Proby Parkway along Drennan Road.

Reach A splits at the intersection of Hancock Expressway and Milton E Proby Parkway near Barnstormers Park. The eastern route follows Milton E Proby Parkway on existing sidewalk to the future Sky View Community Park and existing Sky View Sports Complex. A trailhead is proposed for Sky View Community Park to mark a terminus of Reach A and one of the starting points of Reach B.

The southern route is proposed to continue along Hancock Expressway to Bradley Road at which point the main route follows south east along the canal on an existing soft surface trail. A secondary spur at the Bradley Road intersection is proposed to run south west into existing residential neighborhoods following existing attached sidewalks for the majority, and connecting to Sproul Junior High school and Widefield Preschool. The southern route of Reach A connects into Reach B at a proposed trailhead in Windmill Mesa Park.

# Reach A Status

**3.5mi**  
Existing Sidewalk

**0.8mi**  
Existing Soft Surface

**1.5mi**  
Proposed Trail

**1.0mi**  
Partnership Opportunities



# REACH A

## Opportunities

- The first Partnership Opportunity area on Reach A (0.3 mile trail segment) is identified as short-term priority in the City of Colorado Springs Park System Master plan to help complete the “Ring the Springs Loop” Sand Creek Trail Segment
- The proposed Trailheads are located in Sky View Community Park owned by the City of Colorado Springs and Windmill Mesa Park owned by Widefield School District #3
- Connect Sproul Junior High and the Widefield School District #3 Pre-school to the Canal & Windmill Mesa Park
- Partner with the City of Colorado Springs & El Paso County to provide a 0.7 mile segment of trail along Hancock Expressway to connect the surrounding neighborhoods & schools to Barnstormers Park

## Challenges

- Varying widths of existing sidewalk & right-of-way make wayfinding difficult for first time trail users
- Unmarked road crossings, particularly the Bradley Road crossing to the proposed trailhead at Windmill Mesa Park

## Goals & Objectives

<p><b>Goal 1.</b> Close trail gaps between Astrozon Rd. &amp; Academy Blvd. &amp; along Hancock Expy. between Milton Proby Pkwy. &amp; Bradley Rd.</p>	<p><b>Objectives</b></p> <ul style="list-style-type: none"> <li>• Discuss partnership &amp; funding opportunities with Colorado Springs &amp; El Paso County.</li> <li>• Coordinate with the FMIC where Trail is along the Canal &amp; Identify potential access easements.</li> </ul>
<p><b>Goal 2.</b> Establish Trailheads at Sky View Community Park &amp; Windmill Mesa Park</p>	<p><b>Objectives</b></p> <ul style="list-style-type: none"> <li>• Reach out to the City of Colorado Springs &amp; Widefield School District #3</li> <li>• Develop Trailheads based on the Trail Design Guidelines.</li> <li>• Promote the Trail with ribbon cutting or grand opening celebrations for Trailheads.</li> </ul>
<p><b>Goal 3.</b> Connect the neighboring residents &amp; Turman Elementary, Soaring Eagles Elementary &amp; Sproul Junior High to surrounding Deerfield, Sky View, Barnstormers &amp; Windmill Mesa Park</p>	<p><b>Objectives</b></p> <ul style="list-style-type: none"> <li>• Improve road crossings &amp; wayfinding at key intersections of Milton Proby Blvd., Hancock Expy. &amp; Bradley Rd.</li> <li>• Engage Widefield School District #3 on outdoor &amp; recreation programs that could benefit from using the Trail</li> <li>• Educate local neighborhood groups &amp; hold events such as walking groups or fun runs.</li> </ul>

# Reach A Trail Corridor

## Fountain Mutual Trail



Reach A	Fountain Mutual Irrigation Canal
Trail Corridor	Parkland
Municipal Existing Trails	School Sites
Municipal Proposed Trails	Potential Trailhead
Partnership Opportunities	

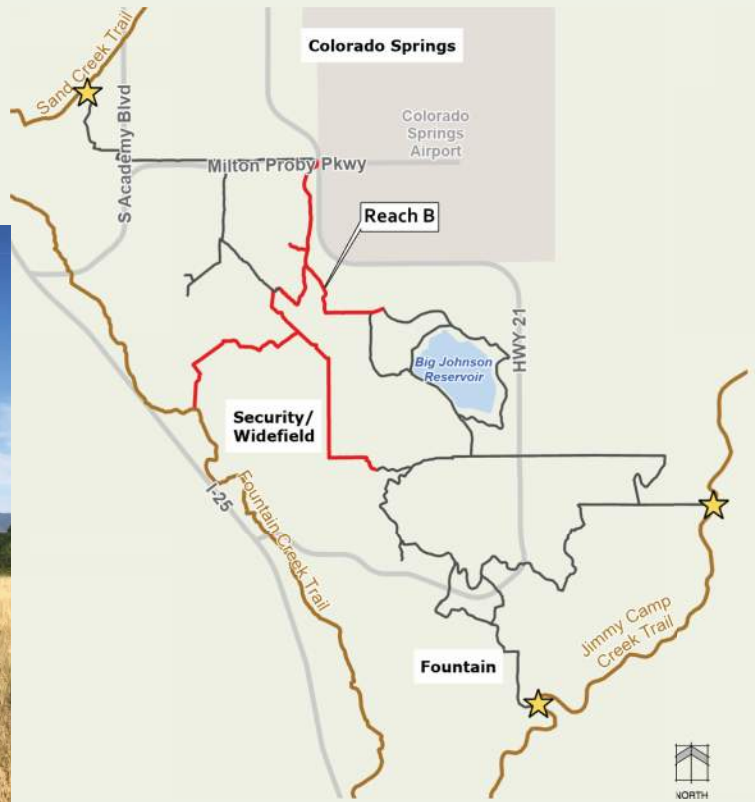


NORTH



0 1,000 2,000 4,000 Feet

# REACH B



## Route

The updated Trail corridor for Reach B is a compilation of portions of Reach C and Reach D from the 2008 Concept Plan. Reach B begins at the Sky View Community Park, it crosses Milton E Proby Park and is proposed to travel south through undeveloped private open space parallel to S Powers Boulevard. A spur trail on existing neighborhood sidewalks connects to French Elementary.

Reach B splits at the curve of the Fountain Mutual Irrigation Canal at the southern end of the private open space. The route following the canal to the south east separates from the canal at Bradley Road traveling east to a proposed trailhead within Bluestem Prairie Open Space and the beginning of Reach C.

The south west route from the intersection with the Canal connects with Reach A at Windmill Mesa Park before it crosses Bradley Road and continues south on existing sidewalk along Wageman Drive. A spur of Reach B heads west through open space towards the Widefield Rec Center, Security Public Library and several schools. This spur of Reach B then travels along existing sidewalk on Main Street before crossing Highway 87 and is proposed to terminate where it connects to Fountain Creek Regional Trail.

Reach B continues on existing sidewalk on Wageman Drive south east before it is proposed to travel through a series of green space tracts eventually intersecting with Grinnell Boulevard. Reach B is proposed to travel south along Grinnell Boulevard to Fontaine Boulevard where it briefly heads east along Fontaine Boulevard before intersecting Reach C at a proposed trailhead within Widefield Community Park.

## Reach B Status

**1.2**mi  
Existing Sidewalk

**0.9**mi  
Existing Soft Surface

**5.5**mi  
Proposed Trail

**4.1**mi  
Partnership Opportunities



# REACH B

## Opportunities

- The proposed Trailheads are located in public parks and open space owned by the City of Colorado Springs and Widefield School District #3
- Connections between schools, regional trails, public parks and open spaces
- Partner with El Paso County Parks along a 1.4 mile portion of Reach B that shares alignment with County proposed secondary regional trail along Grinnell blvd., then east along Fontaine Blvd. to Widefield Community Park and 0.4 miles between HWY 85 and the existing Fountain Regional Trail
- Partner with Colorado Springs along a 1.7 mile portion of Reach B that shares alignment with proposed urban trail in private open space along S. Powers Blvd., Grinnell Blvd. and east 0.6 miles along Bradley Rd.
- Partner with various Homeowner Associations for trail connections through Homeowner Association owned open space

## Challenges

- Varying widths of existing sidewalk & right-of-way make wayfinding difficult for first time Trail users
- Segments of Trail are proposed on private property
- Unmarked road crossings, including Fontaine Blvd. and several along Wageman Dr.

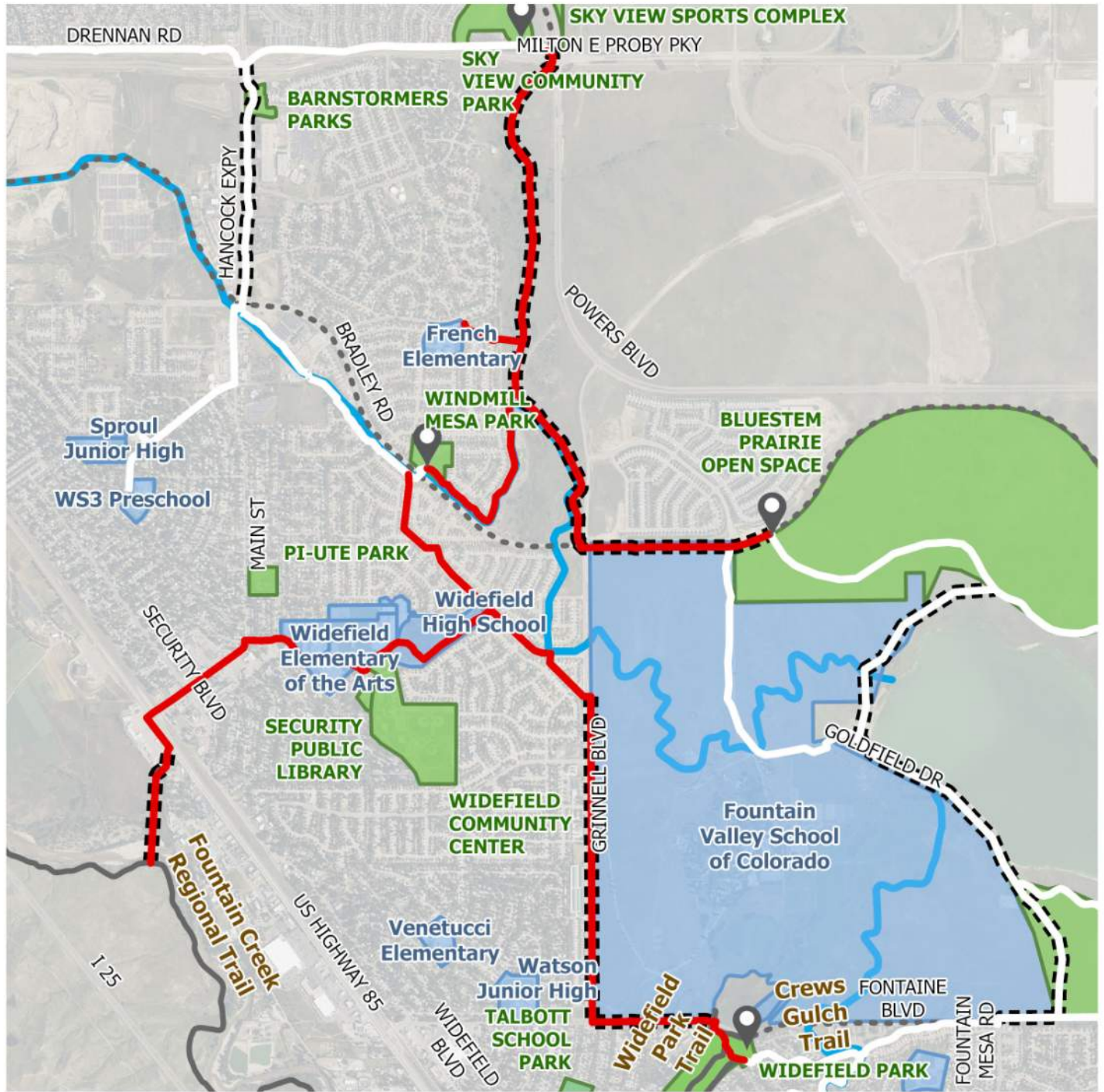
## Goals & Objectives

<p><b>Goal 1.</b> Close trail gaps along Grinnell Blvd., Fontaine Blvd., Bradley Rd. and HWY 85 to Fountain Regional Trail.</p>	<p><b>Objectives</b></p> <ul style="list-style-type: none"> <li>• Discuss partnership &amp; funding opportunities with Colorado Springs on connections to Bluestem Prairie Open Space</li> <li>• Discuss partnership &amp; funding opportunities with El Paso County on connections to Fountain Creek Regional Trail &amp; the proposed bicycle route along Grinnell Blvd. to Widefield Park.</li> </ul>
<p><b>Goal 2.</b> Establish Trail connections through private open space.</p>	<p><b>Objectives</b></p> <ul style="list-style-type: none"> <li>• Reach out to Windmill Mesa neighborhood &amp; Waterview Metropolitan District regarding Trail connections &amp; access.</li> <li>• Engage land owners of properties (Tax ID: 6501400009, 6500000207, 5500000305 &amp; 6512100001) along S. Powers Blvd. &amp; Grinnell Blvd. for potential Trail access easements.</li> </ul>
<p><b>Goal 3.</b> Connect the neighboring residents &amp; schools to surrounding parks, community center and open space.</p>	<p><b>Objectives</b></p> <ul style="list-style-type: none"> <li>• Improve road crossings, wayfinding &amp; close gaps in the Trail.</li> <li>• Engage potential school outdoor &amp; recreation programs that could benefit from using the Trail.</li> </ul>



# Reach B Trail Corridor

## Fountain Mutual Trail



Reach B	Fountain Mutual Irrigation Canal
Trail Corridor	Parkland
Municipal Existing Trails	School Sites
Municipal Proposed Trails	Potential Trailhead
Partnership Opportunities	

0 1,250 2,500 5,000 Feet

# REACH C



Bluestem Prairie Open Space  
Photo by: AllTrails



## Route

The updated Trail corridor for Reach C is a modified route of Reach D from the 2008 Concept Plan. Reach C begins at the proposed trailhead in Bluestem Prairie Open Space. Reach C is proposed to circumnavigate Big Johnson Reservoir owned by the Fountain Mutual Irrigation Company before traveling south to Fontaine Boulevard and connecting with Reach D. Heading west along Fontaine Boulevard Reach C follows an existing soft surface segment of the Crews Gulch Trail to a proposed Trailhead and connection to Reach E before traveling further west to Widefield Community Park and the terminus of Reach B.

# Reach C Status

**0**mi  
Existing Sidewalk

**4.6**mi  
Existing Soft Surface

**3.2**mi  
Proposed Trail

**3.9**mi  
Partnership Opportunities



*Bluestem Prairie Open Space  
Photo by: AllTrails*



# REACH C

## Opportunities

- The proposed Trailheads are located in public parks and open space owned by the City of Colorado Springs and El Paso County
- Connections between schools, regional trails, public parks and open spaces
- Partner with El Paso County Parks along 1.1 mile portion of Reach C that shares alignment with the proposed portion of Crews Gulch Trail along Fontaine Blvd.
- Partner with Colorado Springs and the Fountain Mutual Irrigation Company for 2.8 miles of Trail in Reach C that shares alignment with proposed trails within and adjacent to Bluestem Prairie Open Space and the Big Johnson Reservoir

## Challenges

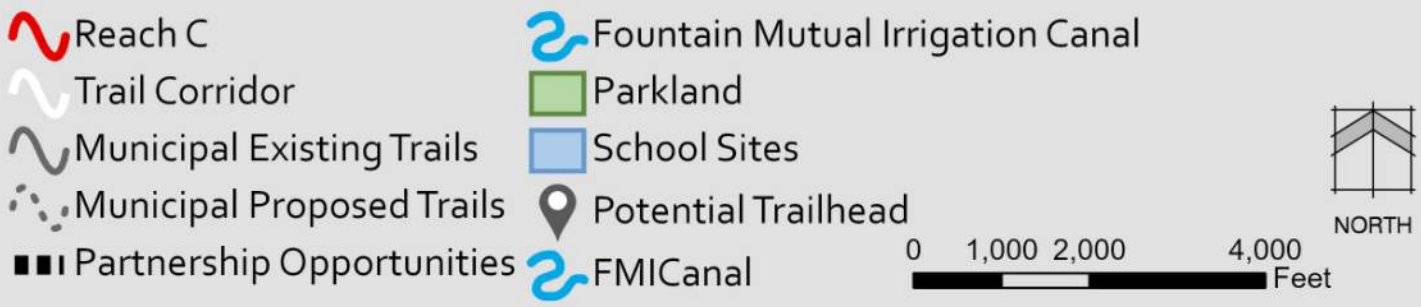
- Varying widths of existing sidewalk and right-of-way make wayfinding difficult for first time Trail users
- Segments of Trail are proposed on Fountain Valley School of Colorado private property
- Unmarked road crossings at Fontaine Blvd. and Goldfield Dr.

## Goals & Objectives

<p><b>Goal 1.</b> Close trail gap from Bradley Rd. along Goldfield Dr to Fontaine Blvd.</p>	<p><b>Objectives</b></p> <ul style="list-style-type: none"> <li>• Discuss partnership opportunities &amp; Trail access easements with the Fountain Valley School, the Fountain Mutual Irrigation Company, Colorado Springs &amp; El Paso County.</li> </ul>
<p><b>Goal 2.</b> Establish Trailheads at north Trail entry to Bluestem Prairie Open Space &amp; shelter area of Widefield Community Park.</p>	<p><b>Objectives</b></p> <ul style="list-style-type: none"> <li>• Engage El Paso County to renovate the existing shelter area at Widefield Community Park to include a shared trailhead for Crews Gulch Trail and the Trail.</li> <li>• Engage the City of Colorado Springs Parks &amp; Recreation to establish a shared trailhead on the north of Bluestem Prairie Open Space.</li> </ul>
<p><b>Goal 3.</b> Connect the neighboring residents &amp; schools to surrounding parks and open space.</p>	<p><b>Objectives</b></p> <ul style="list-style-type: none"> <li>• Engage El Paso County &amp; Colorado Springs on improvements to road crossing of the Trail at Fontaine Blvd. &amp; Goldfield Dr.</li> <li>• Engage potential school outdoor &amp; recreation programs that could benefit from using the Trail, particularly the Fountain Valley School &amp; King Elementary.</li> </ul>

# Reach C Trail Corridor

## Fountain Mutual Trail



# REACH D



## Route

The updated Trail corridor for Reach D is a modified route of Reach F from the 2008 Concept Plan. Reach D begins in Bluestem Prairie Open Space and travels east along Fontaine Boulevard until it intersects with the Fountain Mutual Irrigation Canal. Reach D follows south along the canal. A spur of Reach D heads east through proposed residential development crossing S Mark Sheffel Road and connects to the proposed Jimmy Camp Creek Trail. The main route of Reach D terminates where it meets Reach E at the proposed trailhead in open space along Mesa Ridge Parkway.

# Reach D Status

**0.1 Mi**  
Existing Sidewalk

**0 Mi**  
Existing Soft Surface

**4.9 Mi**  
Proposed Trail

**1.8 Mi**  
Partnership Opportunities



# REACH D

## Opportunities

- Connections between future proposed regional trails, parks and open spaces
- Partner with El Paso County Parks for the 0.5 mile trail portion of Reach D that connects to the proposed Jimmy Camp Creek Regional Trail
- Majority of the route follows the path and easements of the Canal
- Partner with various Homeowner Associations/Metropolitan Districts for trail connections through Homeowner Association/Metropolitan District owned and maintained open space

## Challenges

- Segments of Trail are proposed on private property
- Majority of the Reach D route is proposed
- Future areas of residential development with unknown final layout
- Unmarked road crossings at Mark Sheffel Rd. and Fontaine Blvd.

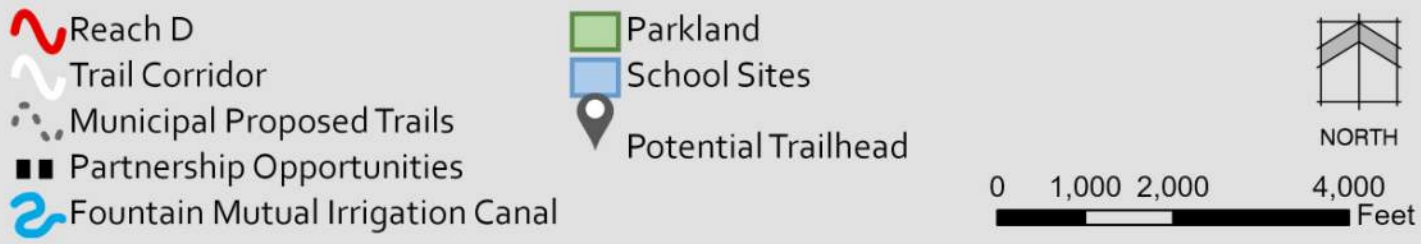
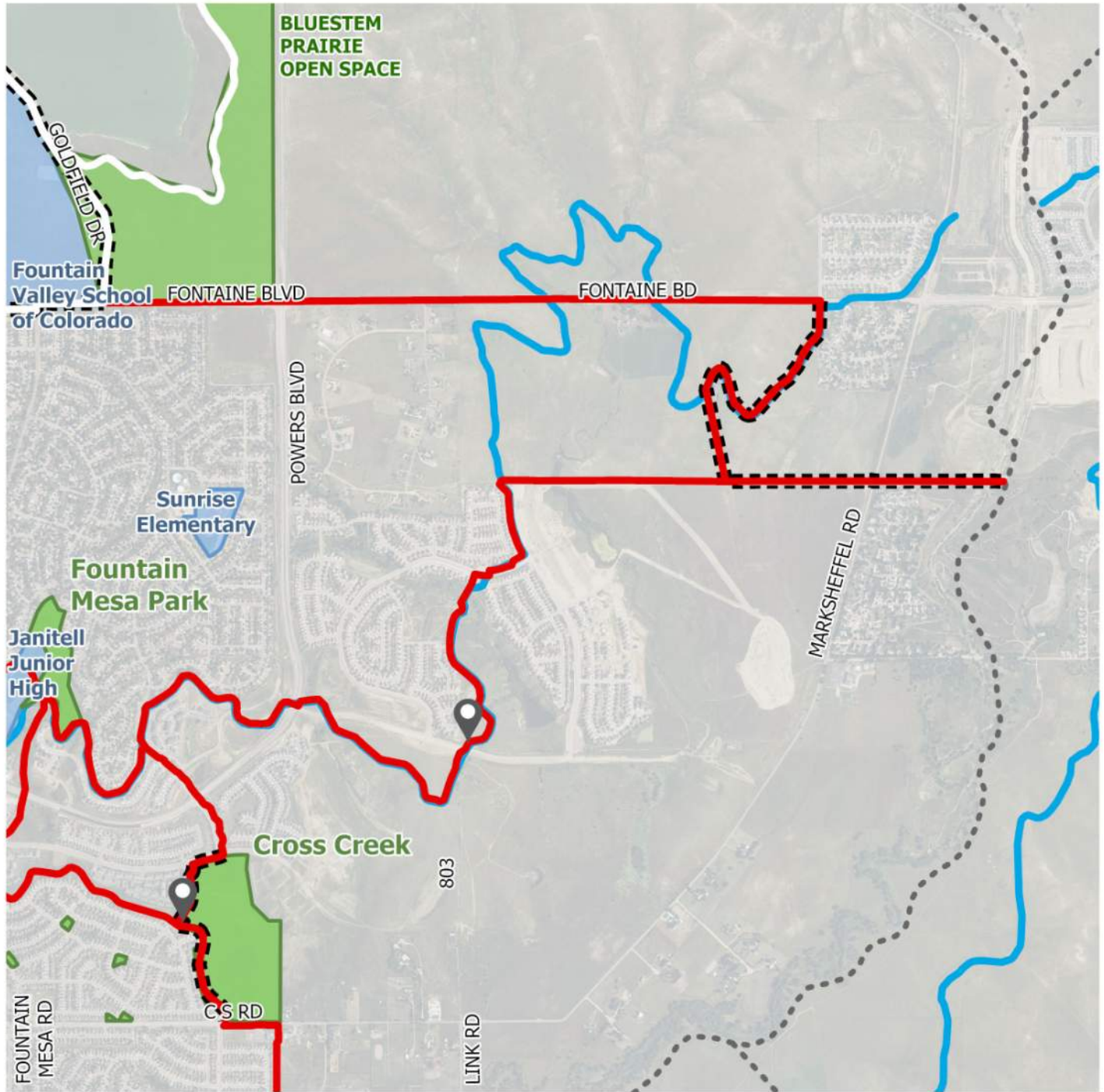
## Goals & Objectives

<p><b>Goal 1.</b> Partner with El Paso County and Colorado Springs Planning Departments to ensure corridor is set aside for trails through the land entitlement process when new developments are proposed.</p>	<p><b>Objectives</b></p> <ul style="list-style-type: none"> <li>• Identify and prioritize future segments</li> <li>• Discuss partnership &amp; funding opportunities for new trail connections with El Paso County.</li> <li>• Research easements &amp; ownership along the Canal.</li> </ul>
<p><b>Goal 2.</b> Establish Trail connections through private open space.</p>	<p><b>Objectives</b></p> <ul style="list-style-type: none"> <li>• Engage Glen Metropolitan District to discuss trail access easements through Metro District from Tax ID 5500000401 south to Mesa Ridge Parkway.</li> <li>• Engage land owners and developers to identify potential Trail access easements and connections to future parks &amp; open space.</li> </ul>
<p><b>Goal 3.</b> Connect the neighboring residents &amp; future schools to surrounding existing and proposed parks and open space.</p>	<p><b>Objectives</b></p> <ul style="list-style-type: none"> <li>• Improve road crossings at Marks Sheffel Rd. &amp; Fontaine Blvd.</li> <li>• Educate and Engage local neighborhoods including the future school site in SL Ranch, the Glenn at Widefield and Cottonwood Grove.</li> </ul>



# Reach D Trail Corridor

## Fountain Mutual Trail



# REACH E



## Route

The updated Trail corridor for Reach E is a modified from the route of Reach E in the 2008 Concept Plan. Reach E begins at the intersection of the Fountain Mutual Irrigation Canal and the existing Crews Gulch Trail. The Reach is proposed to travel south along the Fountain Mutual Irrigation Canal. A spur is proposed south to connect to Webster Elementary and Mesa Ridge High school. Reach E follows existing soft surface trail through Janitell Junior High school and Fountain Mesa Park.

The proposed route for Reach E splits in Fountain Mesa Park. The proposed eastern route of Reach E follows the Fountain Mutual Irrigation Canal with a spur south on existing sidewalk along Sneffels Street connecting to the proposed trailhead in Cross Creek Regional Park. This eastern route of Reach E crosses S Powers Boulevard and eventually connects to Reach D at the proposed trailhead off the continuation of Mesa Ridge Parkway.

The south route of Reach E heads south from Fountain Mesa Park along Fountain Mesa Road then east on Cross Creek. Reach E leaves Cross Creek where it intersects with a drainage way and follows the drainage way to Cross Creek Regional Park. Once at Cross Creek Regional Park, Reach E meanders along the east perimeter of the park before crossing C&S Road to head south along a utility easement towards Heritage Park and eventually connecting to the proposed Jimmy Camp Creek Trail.

# Reach E Status

**0.8 Mi**  
Existing Sidewalk

**1.6 Mi**  
Existing Soft Surface

**4.8 Mi**  
Proposed Trail

**2.0 Mi**  
Partnership Opportunities



# REACH E

## Opportunities

- The proposed Trailhead is located in Cross Creek Regional Park
- Connections between schools, regional trails, commercial centers, public parks and open spaces
- Partner with El Paso County Parks and Widefield Parks and Recreation on 1.3 miles of Trail in Reach E
- Partner with the Cross Creek Metropolitan District on 0.7 mile portion of Reach E that shares alignment with existing and proposed Metropolitan District trails

## Challenges

- Segments of Trail are proposed on private property
- Majority of the Reach E route is proposed
- Mature neighborhoods with limited Trail access
- Unmarked road crossings including Marksheffel Rd.










## Goals & Objectives

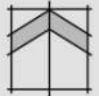

<p><b>Goal 1.</b> Close gaps in Reach E from Widefield Community Park south to Mesa Ridge High school &amp; Mesa Ridge Parkway trailhead west along the Canal.</p>	<p><b>Objectives</b></p> <ul style="list-style-type: none"> <li>• Discuss partnership &amp; funding opportunities for new trail connections with El Paso County, Fountain &amp; Widefield Parks &amp; Recreation</li> <li>•</li> </ul>
<p><b>Goal 2.</b> Establish Trail connections through private open space</p>	<p><b>Objectives</b></p> <ul style="list-style-type: none"> <li>• Engage and Cross Creek Metropolitan District to identify potential access easements through private parks and open space and establish trailhead at Cross Creek Park.</li> </ul>
<p><b>Goal 3.</b> Connect the neighboring residents and schools to surrounding existing and proposed parks and open space</p>	<p><b>Objectives</b></p> <ul style="list-style-type: none"> <li>• Improve road crossings, wayfinding &amp; close gaps in the Trail.</li> <li>• Engage surrounding residents in the final design and implementation of Reach E</li> <li>• Educate local neighborhood groups and hold events such as walking groups or fun runs</li> </ul>

# Reach E Trail Corridor

## Fountain Mutual Trail



 Reach E	 Fountain Mutual Irrigation Canal
 Trail Corridor	 Parkland
 Municipal Existing Trails	 School Sites
 Municipal Proposed Trails	 Potential Trailhead
 Partnership Opportunities	

 NORTH  


This Page  
Intentionally Left Blank

# OVERALL RECOMMENDATIONS

04





**O**rganize Reach projects for feasibility & implementation. Select Priority Projects with key connections or destinations



**I**dentify other agencies with interest or stake in priority sections of Trail. Form team efforts to apply for grants or share in funding Trail segment construction



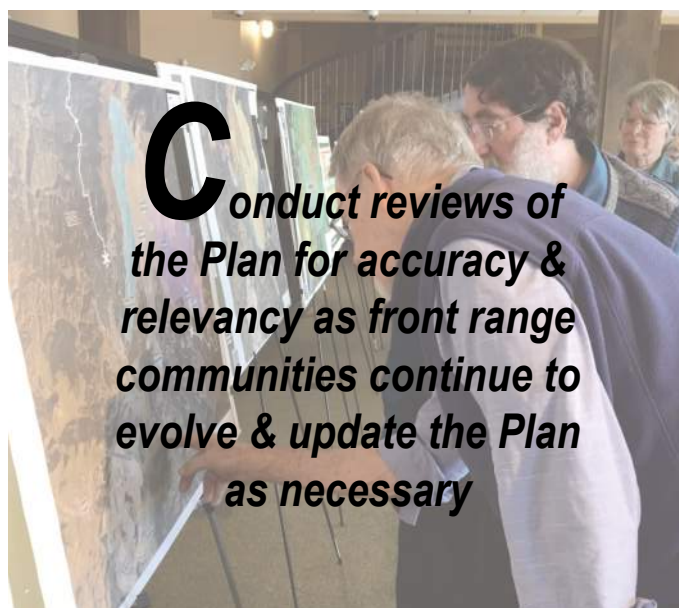
**C**onnect completed Trail segments to expand the Trail user base, destination options & improve Trail access



**S**eek to educate nearby residents & potential users to the existence of completed Trail segments & the recreational opportunities available



**C**onfirm & develop the roles & responsibilities of each agency associated or involved with the Trail



**C**onduct reviews of the Plan for accuracy & relevancy as front range communities continue to evolve & update the Plan as necessary



# PRIORITY PROJECT RECOMMENDATIONS

---

1

**PROJECT:** Construct a segment of Trail in Reach E beginning at Widefield Community Park south to Mesa Ridge High school.

**GOAL:** Increase connectivity and accessibility between the Widefield Country Club Estates and Widefield Country Club Heights neighborhoods, Mesa Ridge High school, Janitell Junior High school, Widefield Community Park, Mesa Ridge Park and Crews Gulch Trail.

2

**PROJECT:** Establish trail access easements for the Trail in Reach B beginning at Sky View Community Park and terminating at Blue Stem Prairie Open Space through parcels west of S. Powers Blvd. and Grinnell Blvd.

**GOAL:** Provide connections to Parks and Open Space for nearby residents in Soaring Eagles, Clear View Estates, Windmill Mesa and Painted Sky at Waterview neighborhoods. Connect French Elementary to Windmill Mesa Park and Bluestem Prairie Open Space.

3

**PROJECT:** Engage Fountain Valley School to secure trail access easements to construct segments of Trail in Reach C along Goldfield Drive and through the Fountain Valley School property. Partner with City of Colorado Springs to construct the segment of trail identified as a short term priority in the COS Parks Master Plan along Goldfield Drive around Bluestem Prairie Open Space.

**GOAL:** Create a network of trails with meaningful connections between Fountain Valley School, Crews Gulch Trail, Widefield Community Park and Bluestem Prairie Open Space. Parks and Open Space access for nearby residents in Painted Sky at Waterview, Fountain Valley Ranch, Sunrise Ridge and Widefield Homes neighborhoods.

4

**PROJECT:** Partner with El Paso County and Colorado Springs Planning Departments to ensure corridor is set aside for segments of Trail in Reach D through the land entitlement process as new developments are proposed.

**GOAL:** Provide recreational trail opportunities including access to Jimmy Camp Creek Regional Trail and connections to Parks and Open Space for future schools and residential developments.

5

**PROJECT:** Engage private land owners (Tax IDs: 5519424016, 5529206001, 5528000028 & 5528000032) to secure trail access easements for segments of Trail in Reach E. Construct segment of Trail in Reach E on parcels owned by FMIC and City of Fountain. This segment of Trail in Reach E begins at Markets at Mesa Rdige LLC connecting to properties owned by the Fountain Mutual Irrigation Canal, City of Fountain and private land owners to proposed Trailhead along Mesa Ridge Parkway.

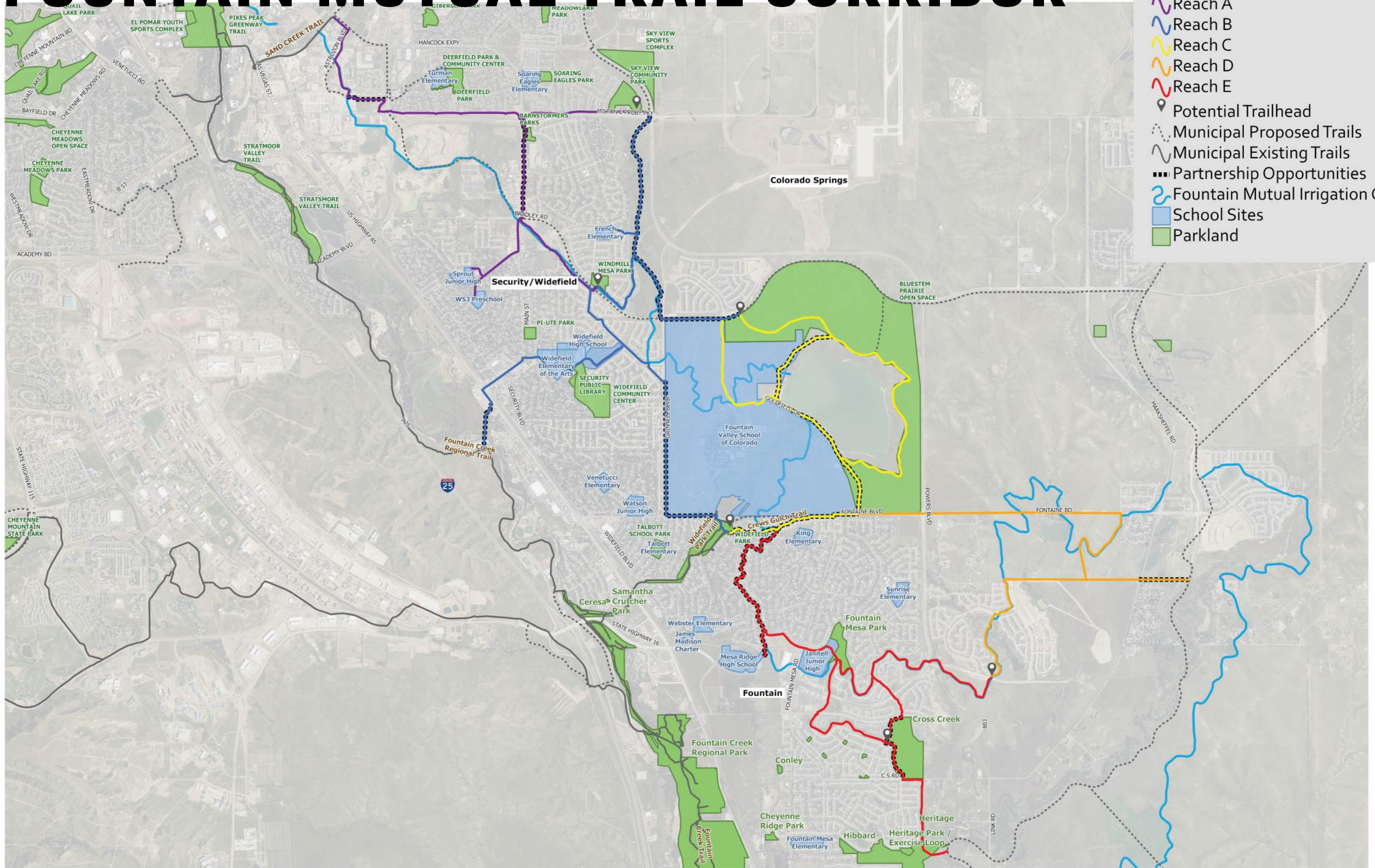
**GOAL:** Establish connections between Fountain Mesa Park, Windmill Mesa High school, Janitell Junior High and future El Paso County Parks. Expand the recreational trail opportunities to the Glen at Widefield, Sunrise Ridge and Mesa Ridge neighborhoods.

This Page  
Intentionally Left Blank

# FOUNTAIN MUTUAL TRAIL CORRIDOR

**Legend**

- Reach A
- Reach B
- Reach C
- Reach D
- Reach E
- Potential Trailhead
- Municipal Proposed Trails
- Municipal Existing Trails
- Partnership Opportunities
- Fountain Mutual Irrigation Canal
- School Sites
- Parkland



This Page  
Intentionally Left Blank



# TRAIL DESIGN GUIDELINES

05

# INTRODUCTION

---

Successful management of the Trail will be critical for the protection of local natural resources and to provide safe and enjoyable recreational experiences to trail users. The Fountain Mutual Trail Guidelines (Guidelines) were developed with two primary objectives: to evaluate and prioritize strategies that will improve the existing Trail, and to introduce new segments that can be managed with minimal resources.

The Guidelines will assist the Fountain Mutual Metropolitan District in setting benchmarks for trail conditions that will result in an optimum trail system. These Guidelines are set forth to serve as the primary Standard Operating Procedure document for management and implementation of the Trail. Establishing the Trail Guidelines will be the first step towards implementation of the updated Plan.

# TRAIL MANAGEMENT & OPERATIONS

---

Successful operation and management will rely on a continued and regular program of maintenance of the Trail and associated support facilities. Establishing a Maintenance and Management Program will not only ensure a quality recreational or travel experience for the trail user, but is also an essential ingredient of a risk management plan for the trail operator.

The FMMD and FMIC must plan to devote sufficient manpower and resources to a regular maintenance schedule in order to meet these goals.

FMIC can provide valuable support to Trail maintenance, monitoring and management along portions of the Trail along the Canal. FMMD will coordinate with FMIC to incorporate the Trail into routine Canal maintenance such as clearance pruning and mowing. FMIC will notify FMMD of construction and Trail closures along the Canal and follow Colorado Springs standards for trail detours. Following maintenance or construction of the Canal FMIC will ensure Trail conditions match those prior to Canal maintenance or construction.

The elements of this Maintenance and Management Program should include:

- Routine updates to the Inventory of the Trail and its related facilities.
- Setting of maintenance goals and standards for the quality of maintenance, hours of operation, etc.
- Developing the tasks necessary to achieve maintenance quality levels.
- Assigning the maintenance tasks to designated groups or individuals.
- Monitoring the quality and frequency of the work.
- Implementing a control system for tracking accomplishments and relevant costs.
- Evaluating the maintenance management program.

Important maintenance tasks for FMMD and FMIC to consider and schedule within the Maintenance and Management Program for the Trail are as follows:

- Mowing - 4-foot min. wide each side of trail where applicable. Flail type mower best - less debris on trail. (3-4 times annually)
- Pruning - Prune woody vegetation 4-feet back from sides of trail – 14-foot vertical clearance. (Annually)
- Removal of Trees/Limbs - Evaluation/ removal of unhealthy or dead trees and limbs. Fallen trees may remain as access control and to minimize disturbance. (Annually)
- Signage - Maintain directional/informational signs and Permanent signs. (periodically as required)
- Trail Surfacing - Repair surface damage from vehicles, erosion, etc. (periodically as required)

## Draft Trail Concept Plan Update

- Litter Pick Up - Trailside-litter pickup. Access area litter pickup. (as required)
- Trash Collection – Removal of trash from receptacles at access areas. (as required)

Following similar trail management programs, the Fountain Mutual Metro District can create partnership agreements with local businesses, clubs and organizations for assistance in implementing the Plan and a Maintenance and Management Program. Formal cooperative agreements can be made with these partners that clearly define the roles and responsibilities of each party.

Involving community members and trail users in the maintenance of trails helps to build a sense of stewardship and ownership. Volunteers can be used for tasks such as litter collection or pruning, or to take pressure off of maintenance workers where volunteer resources are plentiful, allowing these regular resources to be redirected to areas needing more or special attention.

*“Developing an effective maintenance management system is an on-going process.”*

## USER GROUPS

It is not always possible to make accurate predictions of user volumes for planned trails. However a generalized understanding can be established by considering several characteristics of the Trail.

- Connections to Schools – Higher numbers of children and adolescents should be anticipated often accompanied by adults. Peak periods of use will occur during morning rush-hour and slightly ahead of afternoon rush-hour. During Summer months this could be less.
- Connection to Parks, Open Space and Recreational Facilities – Higher proportions of recreational users and children can be expected, which will generally be distributed throughout the day with increased volumes on weekend and summer months.

Age of trail users, and skill and comfort level are often considered together. Providing trails that are inviting and safe for users of all ages, skills and comfort levels, should be a priority. Slower moving trail users such as pedestrians and inexperienced cyclists are to be comfortably accommodated alongside faster, more experienced cyclists. These Guidelines take an inclusive approach to trail users with the intended result that trails are comfortable, enjoyable, and usable for the widest range of users.

## TRAIL STANDARDS & CONSTRUCTION

Trail construction: utilizing the best practices to construct a new trail or improving an existing trail will be critical to its future maintenance and management. The following general guidelines are recommended for basic activities and methods to utilize during Trail construction. Trail guidelines and practices shall stay updated to industry standards, nationally and regionally, that are beneficial to the trail user and management resources.

### TRAIL CORRIDOR:

The Trail corridor will be used by hikers, joggers, bicyclists as well as service and emergency vehicles. The Trail should have a minimum tread width of 8 feet with 2 foot clearance on either side.

### TREAD SURFACE:

Material Crushed Granite or Concrete where feasible.

### TRAIL GRADE:

Trail grades and design will need to accommodate canal maintenance and emergency vehicles. The target trail grade will not exceed 4%, where greater than 4% alternative materials such as concrete should be considered in design and maintenance.

Short Pitch Maximum of 8%.

Maximum Pitch Density of <3% of the total Trail.

Cross-Slope Target Range 1% to 2%

Design Clearing: Width 2 FT outside of trail edge  
Height 8 ft-9ft

Design Turns Radius Minimum 8ft-12ft

### TRAIL INTERSECTIONS:

When multi-use trails cross each other, the primary goal is to prevent collisions between users. This is achieved by designing trails with the appropriate alignments and sightlines, and by providing appropriate warnings to trail users when necessary. Trails should be constructed to intersect each other at 90-degrees wherever possible.

Note that the open sightline zone between diverging trails is a critical element towards reducing possible conflicts between trail users approaching the crossing wayfinding signage is provided for users entering or exiting the crossing by each branch.

### ROAD CROSSINGS:

All of the proposed crossing recommendations in this section should be applied only in consultation with qualified City and County Transportation staff. Preferably, trail alignments are directed towards existing intersections where the crossing can be integrated into the existing operations. This is not always possible, and situations will occur where trails cross roads at mid-block locations.

Pavement markings in roadway crossings serve primarily to provide the crossing with enhanced visibility for motorists. Pavement markings to consider for the Trail include bicycle signals (trail), pedestrian signals (sidewalk) and stop bars for trail users located behind the sidewalk solid center line approaching the crossing warning and wayfinding signage descriptions and placements “Yield” sign facing trail users.

All mid-block crossings will require implementation of a no-stopping zone adjacent the crossing to prevent physical or sightline obstructions.

### DRIVEWAYS/PARK ROADS:

Trails running within road rights-of-way that cross driveways should be avoided whenever possible. In instances where the Trail crosses driveways users should be aware this presents a significant risk for faster trail users as motorists tend to expect slower traffic in the boulevard areas and frequently focus their attention on road traffic. Trail users also may not anticipate crossing motorists, especially at obscured or hidden entrances.

# AMENITIES & TRAILHEADS

### TRAILHEADS:

Trailheads are places that serve as a starting, ending, or interim points along a trail that provides information and, potentially, facilities at varying levels of services to the trail user. The level of facilities and parking capacity at a trailhead shall be determined by the current and anticipated amount of use, type of use and proximity to other trailheads along the Trail. Siting of new trailheads should consider environmental conditions similar to the trail site planning to avoid and minimize environmental degradation at all times. Design of the trailhead should reflect the desired trail class experience, cultural landscapes, and structures in which it exists. Below are recommended Trailhead locations along the Trail:

- Skyview Community Park
- Windmill Mesa Park
- Bluestem Prairie Open Space
- Widefield Community Park
- Mesa Ridge Parkway
- Cross Creek Open Space

### TRAIL SHELTERS:



Shelter siting, shall be evaluated for annual estimated use, use types, and character of current or future Trail development levels. Shelters will be Polygon Gable Roof Sun Shelters Model #SSG 8x9 with Benches, Evergreen roof color and Suede Frame color or approved equal. Below are recommended potential Trail Shelter placements along the Trail:

- Cross Creek Open Space
- Grinnell Blvd.



## Draft Trail Concept Plan Update

- South of Bradley Rd. intersection
- Widefield High School
- Fountain Mesa Park
- Intersection of Reach D and Jimmy Camp Creek

### TRAIL KIOSKS:



Kiosks will be located at Trailheads, spur Trails and Trail intersections with other Regional Trails. Trail Kiosk will be Poligon Three Sided, Three Column Model #KSK 3-8 Signs, evergreen roof color and suede frame color or approved equal.

### TRAIL MARKERS:



Trail Markers will be located at one mile intervals where possible. Trail Markers will be concrete pre-cast bollards Wausau Tile Model No. TF6035 C55EXP 2'-8" in height or approved equal.

### BENCHES:



Benches will be located along the Trail at two per mile where space allows and at trailheads where applicable. Benches will be Timberform Palomar Model #2644-6 with armrests with coffee tan seat and back, evergreen support and concrete footings or approved equal. Benches should be placed on a crushed granite or concrete pad.

### WASTE RECEPTACLES:



Waste Receptacles will be located with benches near trail access points, trailheads and trail shelters. Waste Receptacles will be Timberform Palomar 2654 Hinged-Lid Litter Container, Evergreen Color and concrete footing or approved equal.

### BIKE RACKS:



Bike racks shall be installed at all designated trailheads and shelters along the Trail. Bike Racks will be Columbia Cascade Original CycLoops 2170-5, evergreen color with concrete footer mount or approved equal.

Bike Racks should be placed on a crushed granite or concrete pad.

## SIGNAGE & REGULATIONS

FMMD will take necessary steps to provide both a safe trail for the users and to protect themselves from liability claims. Where possible, hazardous conditions and attractive nuisances should be identified and removed during the original construction of the trail. Those that cannot be removed should be fenced off and/or have warning signs posted.

With the ever-increasing use of cell phones by the general public, including trail users, aspects of security have changed in recent years. Users are very well prepared to report and locate questionable activity on or within trail corridors. User surveillance tends to deter potential criminal activity.

As Reaches of the Trail are opened in phases, clear mention should be made at all Trail entrances and in any printed/electronic material (especially trail signage, maps, guidebooks and pamphlets) that portions of the Trail are still not yet fully developed nor open to the public and that users must exercise the necessary care when using the Trail.

## SIGN TYPES:

### REGULATORY SIGNS:



These include signs such as yield or stop signs which communicate a regulation of some type to trail users. These signs are not to be confused with informational signs such as those that communicate bylaw information and which may form part of the wayfinding system. Regulatory signs shall be placed as close as possible to the point where the regulation is in effect.

### WARNING SIGNS:



Warning signs serve to warn trail users about any abnormal or potentially hazardous conditions ahead such as steep slopes or sharp turns. They should always identify the specific condition being warned against. Warning signs shall typically be placed a distance in advance of the condition identified, except where the sign is placed as a marker on the potential hazard, such as the leading edge of a fence near the trail. The specific location of sign placement will vary, but should give faster users sufficient distance to stop. Typically this would be the sight stopping distance minus the distance that the sign can be read from. Warning signs include the typical black-on-yellow signs indicating permanent conditions as well as the black-on-orange signs indicating temporary conditions.

### WAYFINDING SIGN SYSTEM:

The wayfinding system has three distinct signage types that work together to provide trail users with information that will assist them in navigating through the trail system. The information being communicated can be summarized as: confirmation that a facility is the desired trail; selection of correct direction at intersections, crossings, etc; determination of distances traveled and distances to points ahead; Individual sign types usually perform multiple functions

1. Identification of major destinations and landmarks;
2. Identification of network connections to facilitate changes in destination or routing;
3. Identification of levels of accessibility; and rules-of-the-trail and etiquette

### DECISION SIGNS:



Decision signs are used to identify route options at any decision points along a trail (trail-trail crossings, trail-access intersections), and at access points to parks, streets, etc. Decision signs should include information about connecting trails, pedestrian or bicycle facilities, as well as identifying important destinations ahead. Decision signs should always make note of accessibility conditions, including a description of conditions to be encountered. Decision signs are to be located 15 to 30 feet before decision points.

### CONFIRMATION SIGNS:



Confirmation signs are used to confirm to trail users what trail they are on, and to indicate distance to points ahead. Confirmation signs are to be located 70 to 100 feet after decision points, as well as approximately every

half mile along a continuous trail where no other decision or information signs are present.

### ACCESS/ROAD INFORMATION SIGNS:

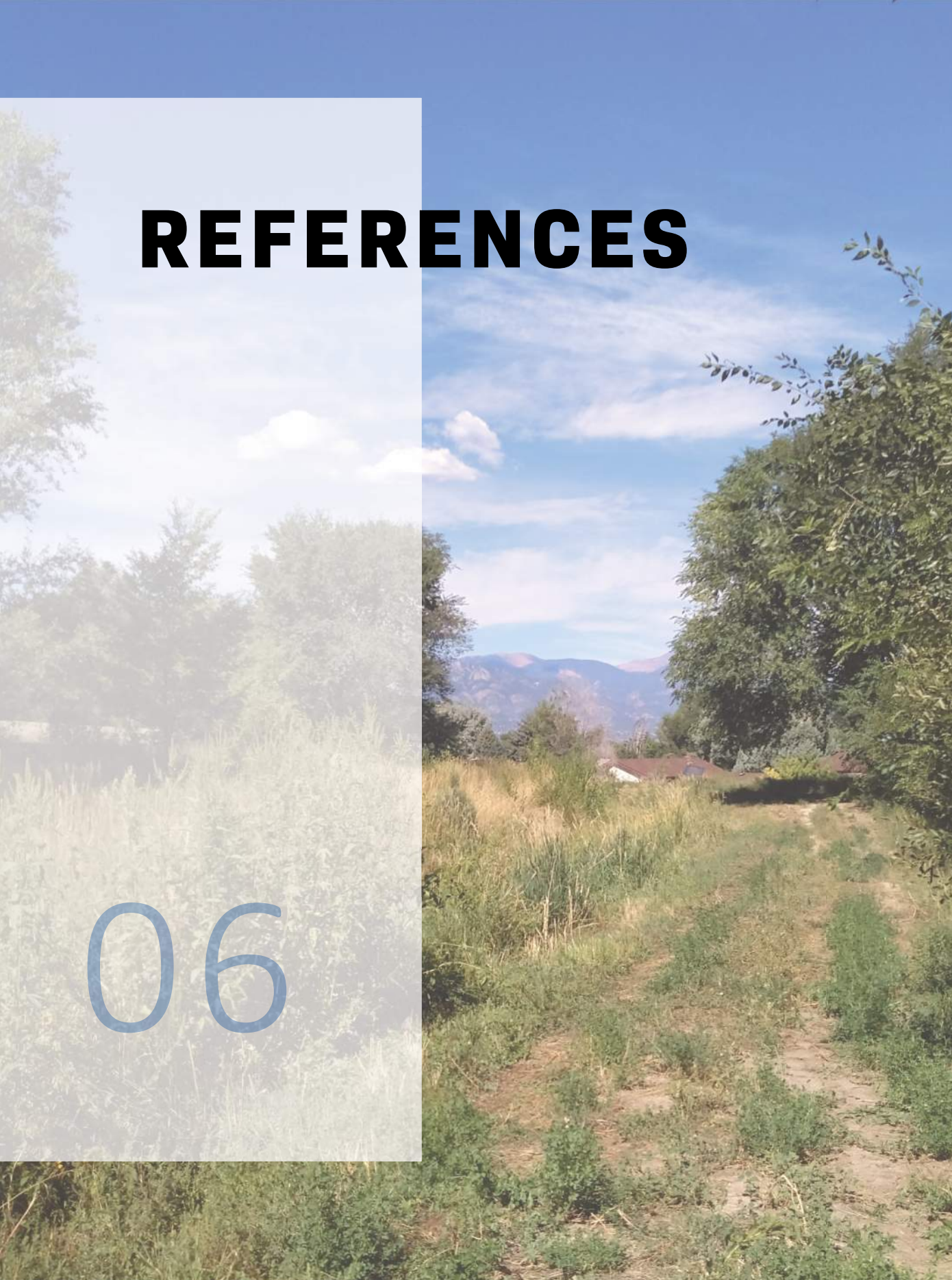


Access/road information signs are used to identify the trail (by name and EMS location code, as applicable), to identify distance to the next trail exit, and to mention trail etiquette. Access/road

information signs are to be located 15 to 30 feet from the trail access road and be visible from any cycling or pedestrian facilities in the roadway.

# REFERENCES

06



This Page  
Intentionally Left Blank

# REFERENCES

- 
1. City of Fountain. 2003. Parks, Recreation and Trails Master Plan.
  2. Colorado Springs Parks, Recreation & Cultural Services. 2014. Colorado Springs Park System Master Plan.
  3. El Paso County Parks Department. 2013. El Paso County Parks Master Plan.
  4. Fountain Mutual Metropolitan District. 2008. Fountain Mutual Trail Concept Plan.
  5. National Park Service. 2012. Cuyahoga Valley National Park Sustainable Trail Guidelines.
  6. Santa Cruz County Regional Transportation Commission. 2014. Monterey Bay Sanctuary Scenic Trail Network Master Plan.
  7. St. Johns County. 2003. Greenway, Blueway & Trails Master Plan.
  8. Toronto Transportation Services Parks, Forestry & Recreation. 2015. Toronto Multi-Use Trail Design Guidelines.
  9. Widefield School District #3. 2016. Widefield School District #3, Community Center, Parks, Recreation, Facilities and Trails Master Plan.

## GIS Data Sources

*Maps throughout this plan were created using ArcGIS® software by Esri. ArcGIS® and ArcMap™ are the intellectual property of Esri and are used herein under license. Copyright © Esri. All rights reserved. For more information about Esri® software, please visit [www.esri.com](http://www.esri.com).*

1. El Paso County. (2020). Parcels, Trails, Special Improvement Districts, Parks. El Paso County Information Technology. Retrieved from <https://admin.elpasoco.com/free-gis-data/>
2. City of Colorado Springs. (2020). Trails, Parkland, Open Space, Municipal Boundary. City of Colorado Springs Department of Information Technology. Retrieved from <https://coloradosprings.gov/page/map-gallery-1>
3. Colorado Department of Transportation. (2020). Local Roads, Major Roads, Highways. Retrieved from <https://dtdapps.coloradodot.info/otis/catalog>
4. City of Fountain. (2020) Trails, Parkland. N. Burns. Retrieved from <https://www.fountaincolorado.org/cms/One.aspx?portalId=6004447&pageId=9011883>

