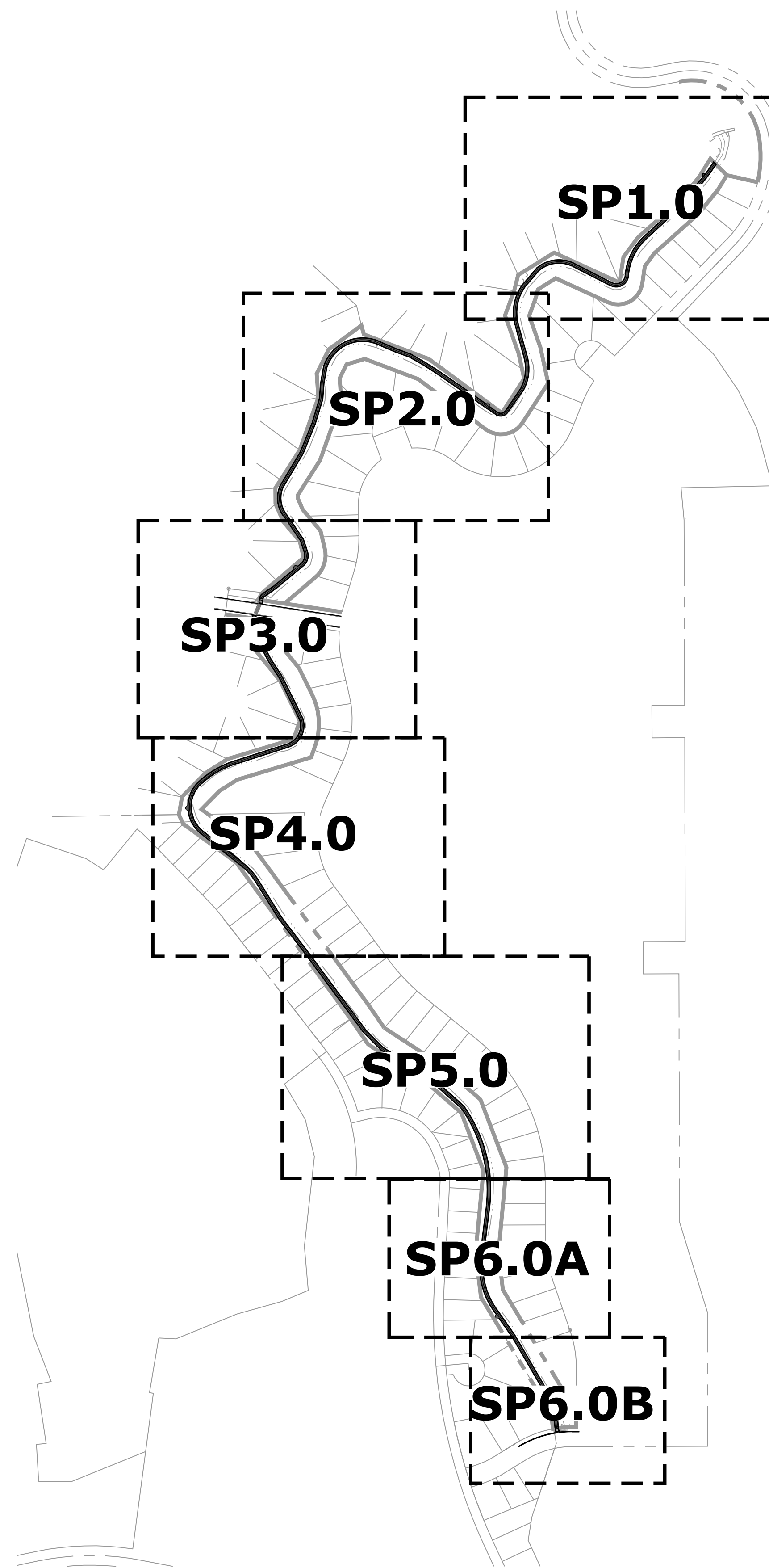


FOUNTAIN MUTUAL TRAIL REACH E

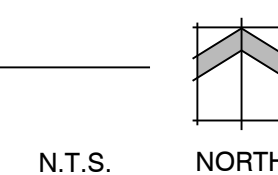
CITY OF COLORADO SPRINGS, COLORADO CONSTRUCTION DOCUMENTS

TRAIL CONSTRUCTION NOTES

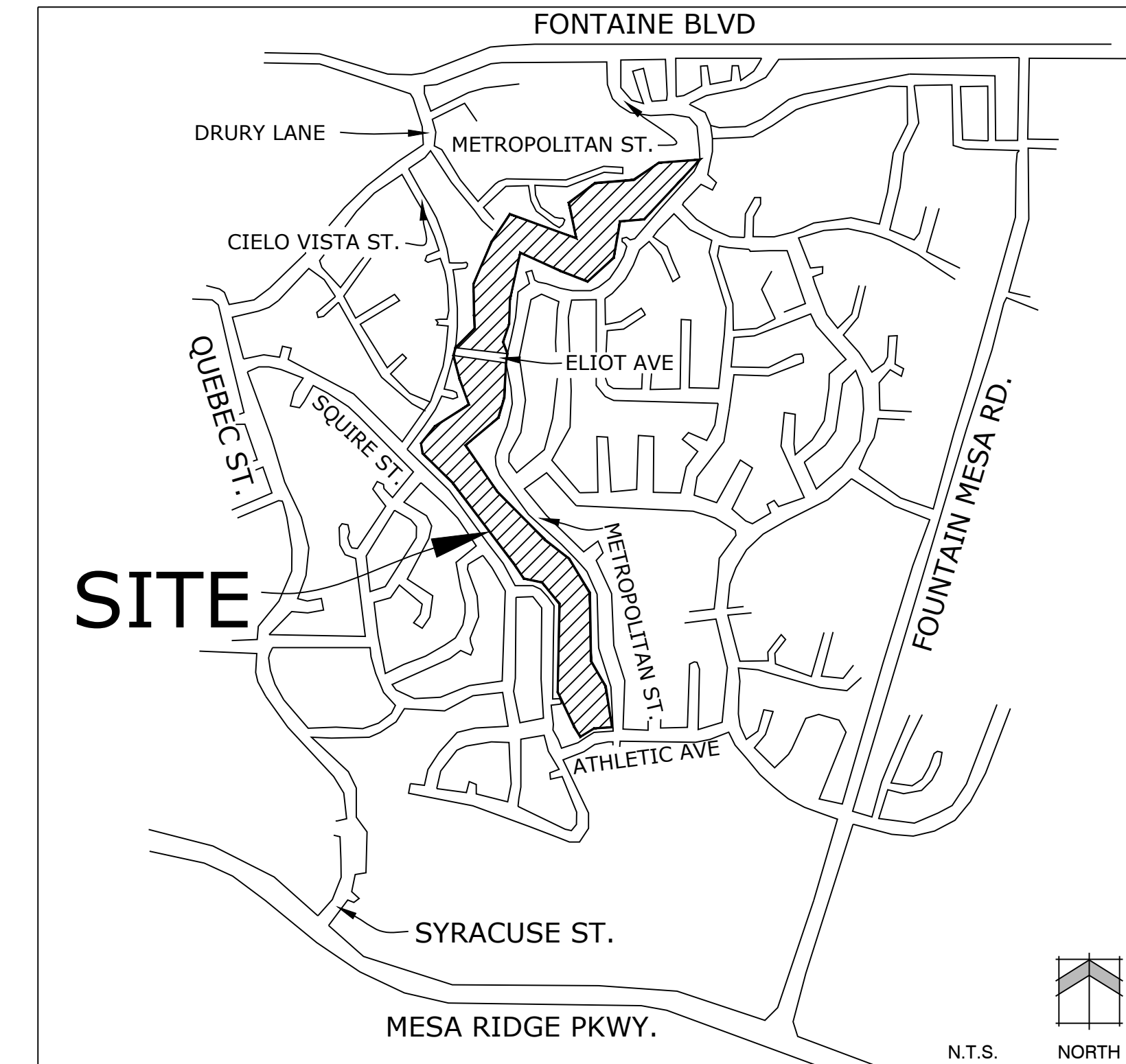
1. SITE CONDITIONS SHOWN ARE FROM DESIGN PLANS SUPPLEMENTED BY FIELD SURVEY BY DREXEL, BARRELL & CO. CONFIRM CONDITIONS AND REPORT ANY DISCREPANCIES TO THE OWNER'S REPRESENTATIVE.
2. CONTRACTOR TO FIELD VERIFY AND PROPERLY LOCATE ALL IMPROVEMENTS PRIOR TO CONSTRUCTION.
3. CONSTRUCTION STAKING FOR THIS PROJECT IS TO BE PROVIDED BY THE CONTRACTOR. STAKING SHALL BE COORDINATED WITH THE GENERAL CONTRACTOR AND SUB-CONTRACTORS TO ESTABLISH SUFFICIENT CONTROL FOR CONSTRUCTION. ANY DETAILED LAYOUT WILL BE THE RESPONSIBILITY OF THE CONTRACTOR.
4. PRIOR TO CONSTRUCTION CONTACT THE UTILITY NOTIFICATION CENTER OF COLORADO (UNCC) (811) OR 1-899-922-1987 A MINIMUM OF 72 HOURS PRIOR TO ANY EXCAVATION.
5. IT SHALL BE THE RESPONSIBILITY OF THE CONTRACTOR TO VERIFY THE EXISTENCE AND LOCATION OF ALL UNDERGROUND UTILITIES ALONG THE SITE. THE OMISSION FROM OR THE INCLUSION OF UTILITY LOCATIONS ON THE PLANS IS NOT TO BE CONSIDERED AS THE NON-EXISTENCE OF OR A DEFINITE LOCATION OF EXISTING UNDERGROUND UTILITIES.
6. THE CONTRACTOR WILL TAKE THE NECESSARY PRECAUTIONS TO PROTECT EXISTING UTILITIES, BUILDINGS, FENCES, AND ROADWAYS FROM DAMAGE DUE TO THIS OPERATION. ANY DAMAGE TO THE ABOVE WILL BE REPAIRED AT THE CONTRACTORS EXPENSE, AND ANY SERVICE DISRUPTION WILL BE SETTLED BY THE CONTRACTOR.
7. COORDINATE CONSTRUCTION ACTIVITY CLOSELY WITH FOUNTAIN MUTUAL IRRIGATION COMPANY AND FOUNTAIN MUTUAL METROPOLITAN DISTRICT WITH RESPECT TO VEHICULAR AND PEDESTRIAN MOVEMENTS WITHIN THE CONSTRUCTION AREA AND ANY OTHER POTENTIAL IMPACTS TO OPERATIONS.
8. THE OWNER WILL RETAIN A QUALIFIED TESTING LABORATORY TO PROVIDE QUALITY CONTROL TESTING FOR THIS CONSTRUCTION. TESTING FREQUENCY AND INTERVAL SHALL BE IN ACCORDANCE WITH SPECIFICATIONS. ANY RETESTING REQUIRED AS A RESULT OF INITIAL TESTS NOT MEETING SPECIFICATIONS SHALL BE THE RESPONSIBILITY OF THE CONTRACTOR. THE CONTRACTOR SHALL COORDINATE TESTING WITH THE LABORATORY AND FURNISH A COPY OF TEST RESULTS TO THE DESIGN PROFESSIONAL OF RECORD FOR HIS USE IN CERTIFYING.
9. THE CONTRACTOR SHALL MAINTAIN AN ACCURATE "AS BUILT" RECORD OF ALL CONSTRUCTION AND SHALL PROVIDE SAME TO THE DESIGN PROFESSIONAL OF RECORD FOR HIS USE IN PREPARATION OF THE "AS BUILT" EXHIBITS.
10. THE CONTRACTOR SHALL WARRANT ALL WORKMANSHIP AND MATERIALS IN ACCORDANCE WITH TERMS AND CONDITIONS OF THE CONTRACT, BUT NO LESS THAN ONE (1) YEAR.



SHEET KEY MAP



VICINITY MAP

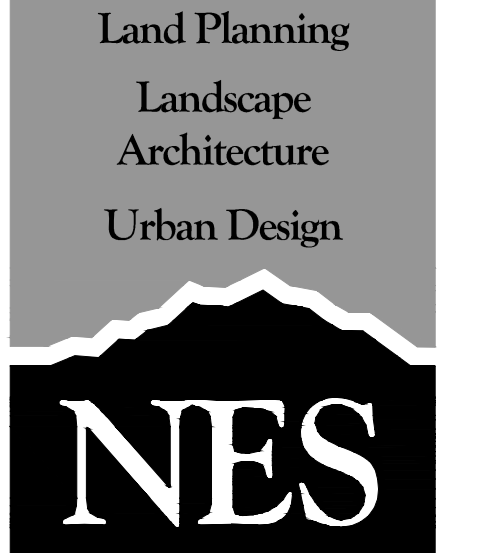


SITE DATA

OWNER(S):	Widefield School District 3 645 Widefield Dr. Colorado Springs, CO 80911
	Fountain Mutual Metropolitan District Managed by: Balanced Management Services Co. Elise Bergsten P.O. Box 1834 Colorado Springs, CO 80901
LANDSCAPE ARCHITECT:	NES Inc. 619 N. Cascade Ave. Suite #200 Colorado Springs, CO 80903
SURVEYOR:	Drexel, Barrell & Co. 3 South 7th Street Colorado Springs, CO 80905
Tax ID Number(s):	5519107030 & 5519412001

SHEET INDEX

Sheet 1 of 8:	Cover Sheet
Sheet 2 of 8:	SP-1.0 Site Plan
Sheet 3 of 8:	SP-2.0 Site Plan
Sheet 4 of 8:	SP-3.0 Site Plan
Sheet 5 of 8:	SP-4.0 Site Plan
Sheet 6 of 8:	SP-5.0 Site Plan
Sheet 7 of 8:	SP-6.0 Site Plan
Sheet 8 of 8:	SD-1.0 Details



N.E.S. Inc.
619 N. Cascade Avenue, Suite 200
Colorado Springs, CO 80903

Tel. 719.471.0073
Fax 719.471.0267

www.nescolorado.com

© 2012. All Rights Reserved.

FOUNTAIN MUTUAL TRAIL REACH E CONSTRUCTION DOCUMENTS

WIDEFIELD, CO

DATE: 10.20.2020
PROJECT MGR: C. LIEBER
PREPARED BY: B. ITEN

**NOT FOR
CONSTRUCTION**

BID SET

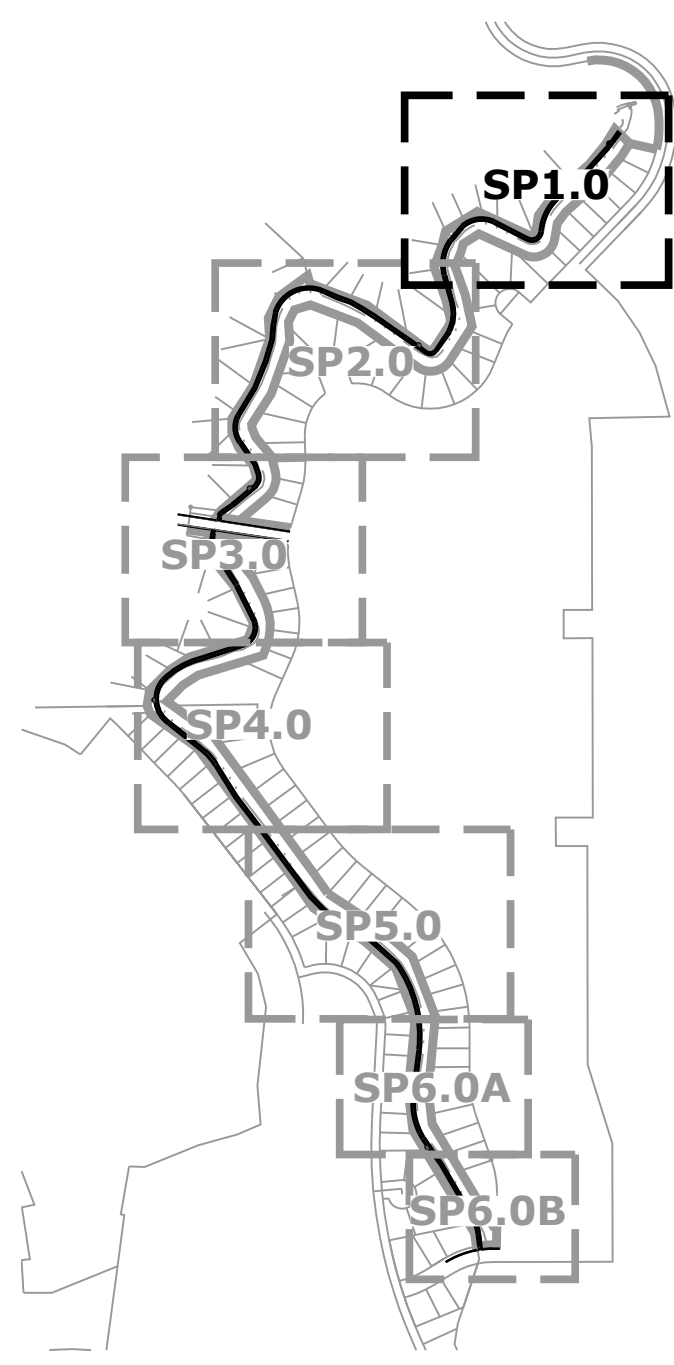
DATE	BY	DESCRIPTION

COVER SHEET

C

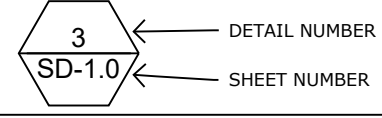
1 OF 8

SHEET KEY MAP



KEY NOTE SCHEDULE

NUMBER	TITLE
1/SD-1.0	SOFT SURFACE TRAIL
2/SD-1.0	10 FT. RAMP
3/SD-1.0	BENCH
4/SD-1.0	KIOSK SIGN
5/SD-1.0	TRAIL MARKER
6/SD-1.0	LITTER RECEPTACLE
7/SD-1.0	EXISTING TREE PROTECTION DETAIL



Land Planning
Landscape Architecture
Urban Design

N.E.S. Inc.
619 N. Cascade Avenue, Suite 200
Colorado Springs, CO 80903

Tel. 719.471.0073
Fax 719.471.0267

www.nescolorado.com

© 2012. All Rights Reserved.

FOUNTAIN MUTUAL TRAIL
REACH E
CONSTRUCTION DOCUMENTS
WIDEFIELD, CO

DATE: 10.20.2020
PROJECT MGR: C. LIEBER
PREPARED BY: B. ITEN

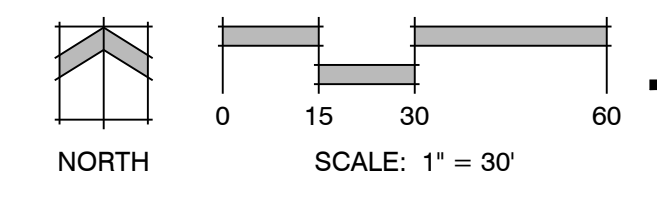
NOT FOR CONSTRUCTION

BID SET

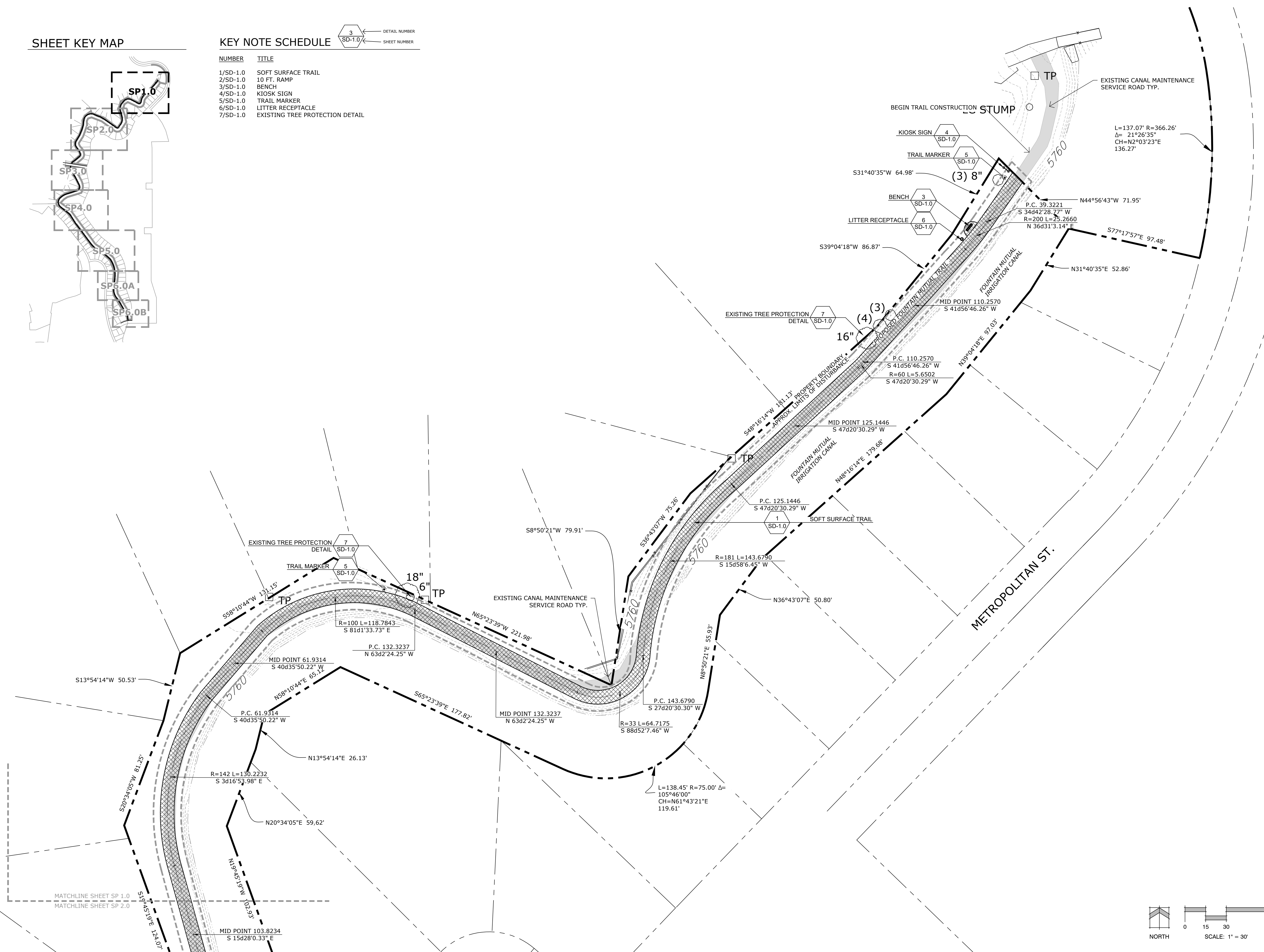
DATE	BY	DESCRIPTION

SITE PLAN

SP-1.0
2 OF 8



P:\PHOTO\PHOTO\PHOTO Trail Master Plan\Drawings\1.0\CD\SP1.0.dwg [SP-1.0] 10/20/2020 7:24:54 AM litem



FOUNTAIN MUTUAL TRAIL
REACH E
CONSTRUCTION DOCUMENTS
WIDEFIELD, CO

DATE: 10.20.2020
PROJECT MGR: C. LIEBER
PREPARED BY: B. ITEN

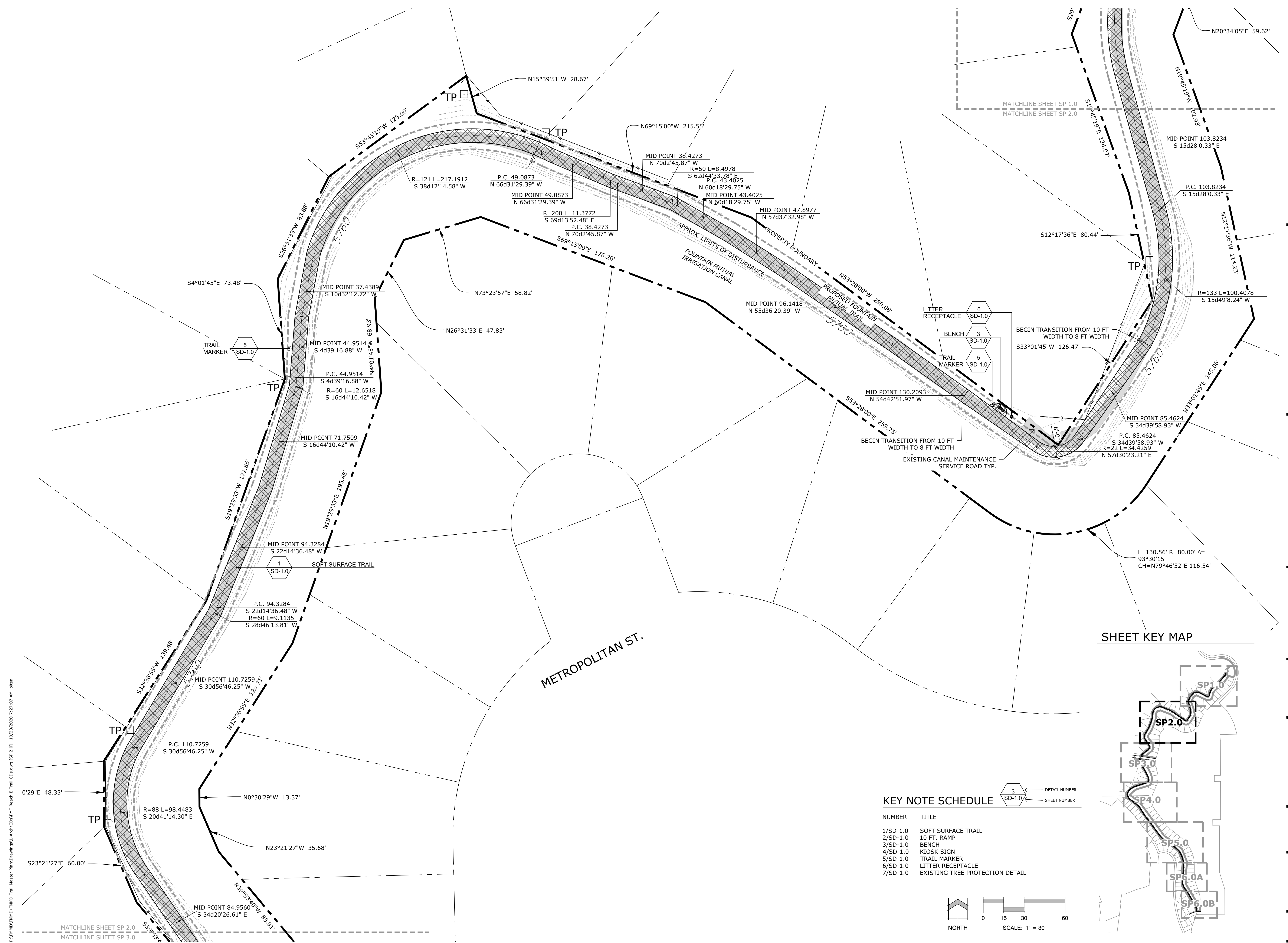
NOT FOR CONSTRUCTION

BID SET

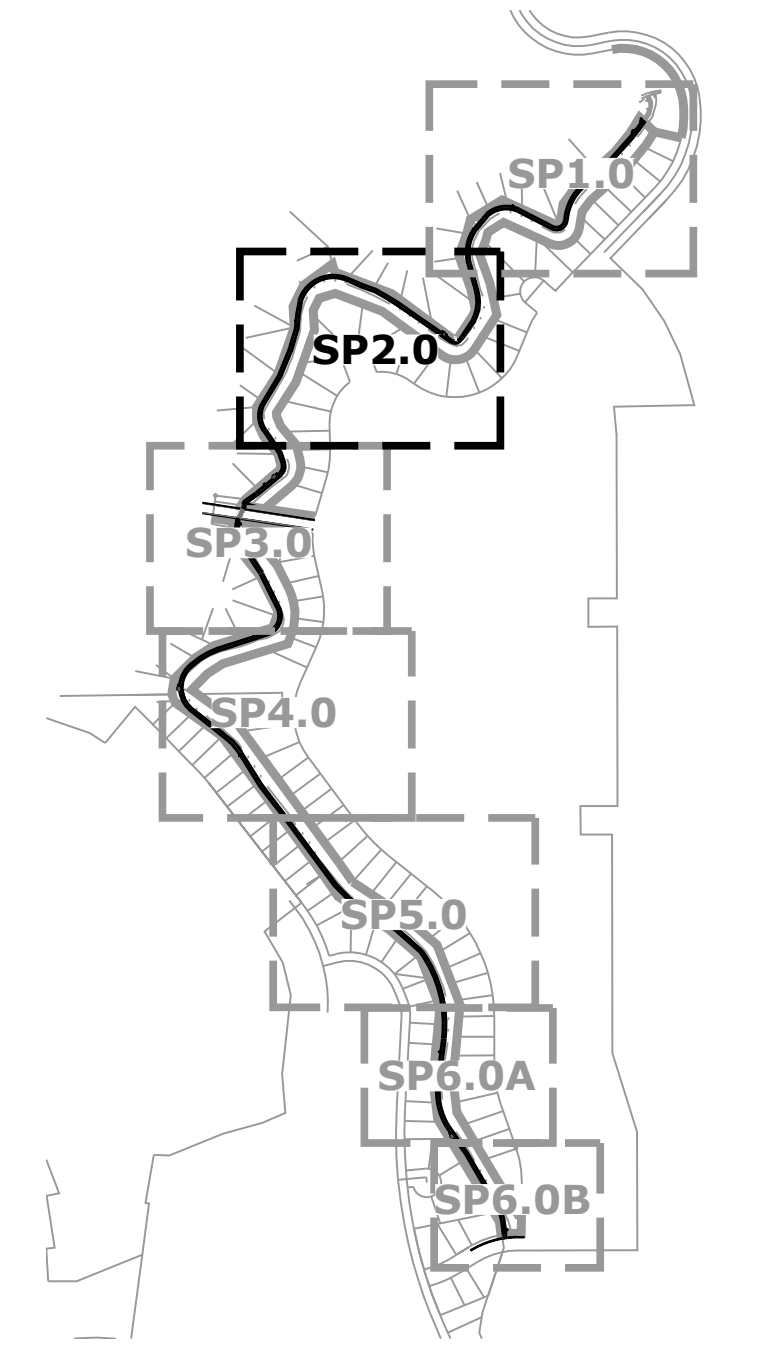
DATE	BY	DESCRIPTION

SITE PLAN

SP-2.0
3 OF 8

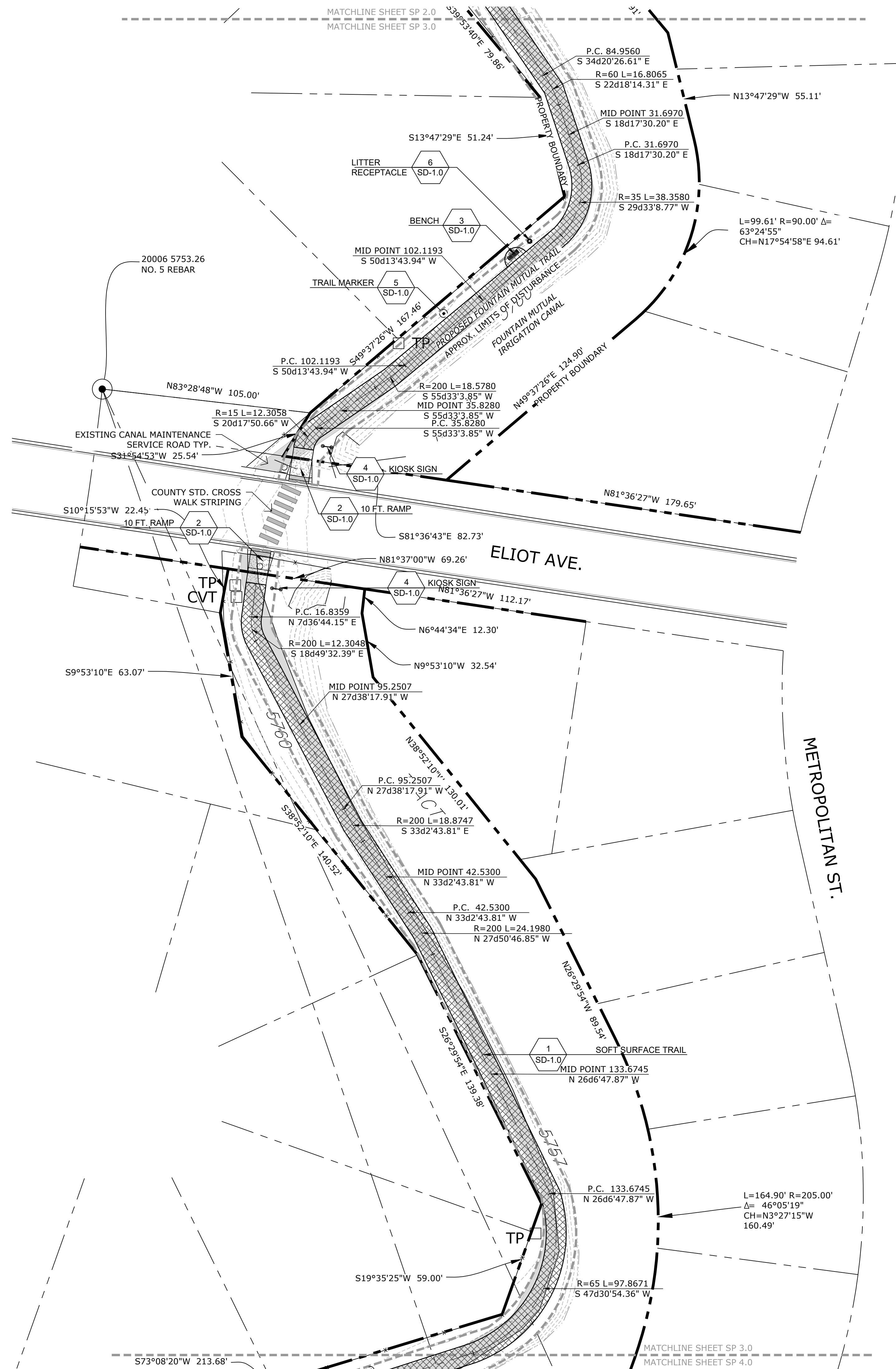


SHEET KEY MAP

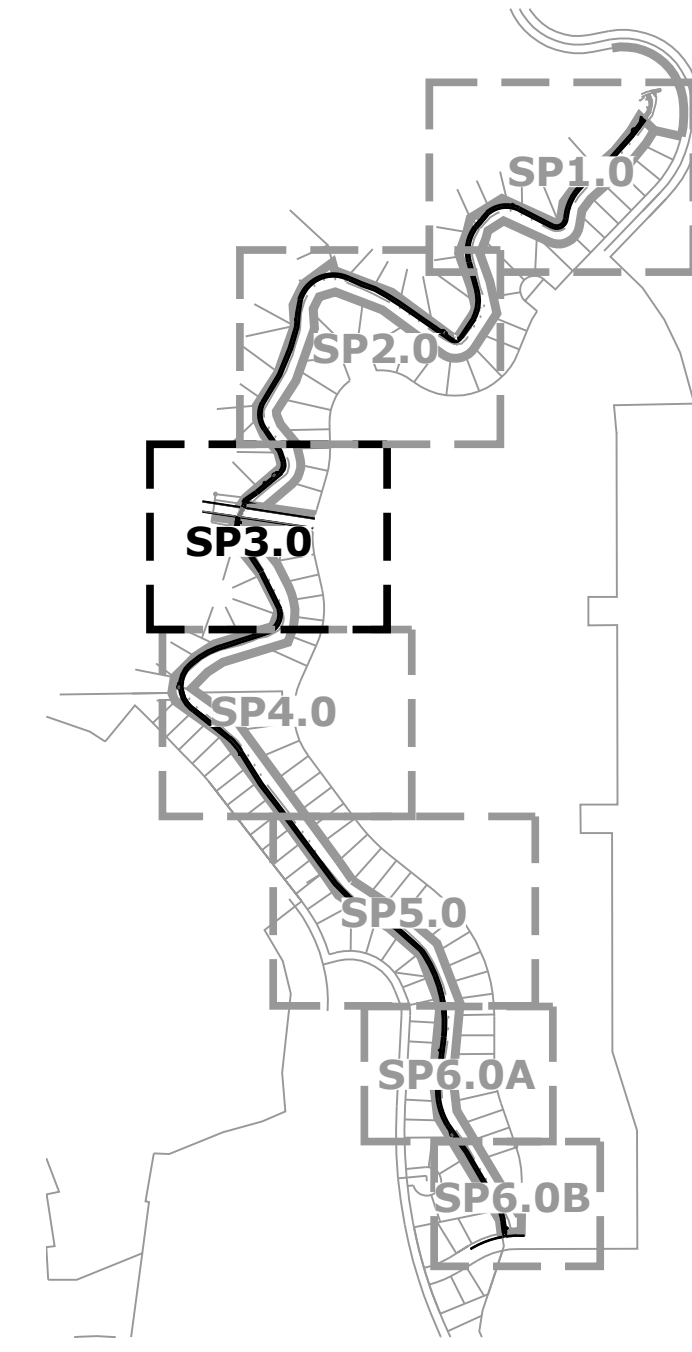


P:\PHOTO\PHOTO\PHOTO Trail Master Plan\Drawings\Reach E Trail CD\Drawings\SP 2.0 10/20/2020 7:27:07 AM .dgn

P:\PHOTO\PHOTO\PHOTO Trail Master Plan\Drawings\1_Arch\CD\SP3\MT Reach E Trail CDs.dwg [SP 3.0] 10/20/2020 7:27:59 AM User

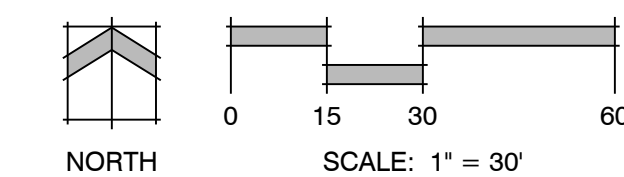


SHEET KEY MAP



KEY NOTE SCHEDULE

NUMBER	TITLE
1/SD-1.0	SOFT SURFACE TRAIL
2/SD-1.0	10 FT. RAMP
3/SD-1.0	BENCH
4/SD-1.0	KIOSK SIGN
5/SD-1.0	TRAIL MARKER
6/SD-1.0	LITTER RECEPTACLE
7/SD-1.0	EXISTING TREE PROTECTION DETAIL



Land Planning
Landscape Architecture
Urban Design

N.E.S. Inc.
619 N. Cascade Avenue, Suite 200
Colorado Springs, CO 80903

Tel. 719.471.0073
Fax 719.471.0267

www.nescolorado.com

© 2012. All Rights Reserved.

FOUNTAIN MUTUAL TRAIL
REACH E
CONSTRUCTION DOCUMENTS
WIDEFIELD, CO

DATE: 10.20.2020
PROJECT MGR: C. LIEBER
PREPARED BY: B. ITEN

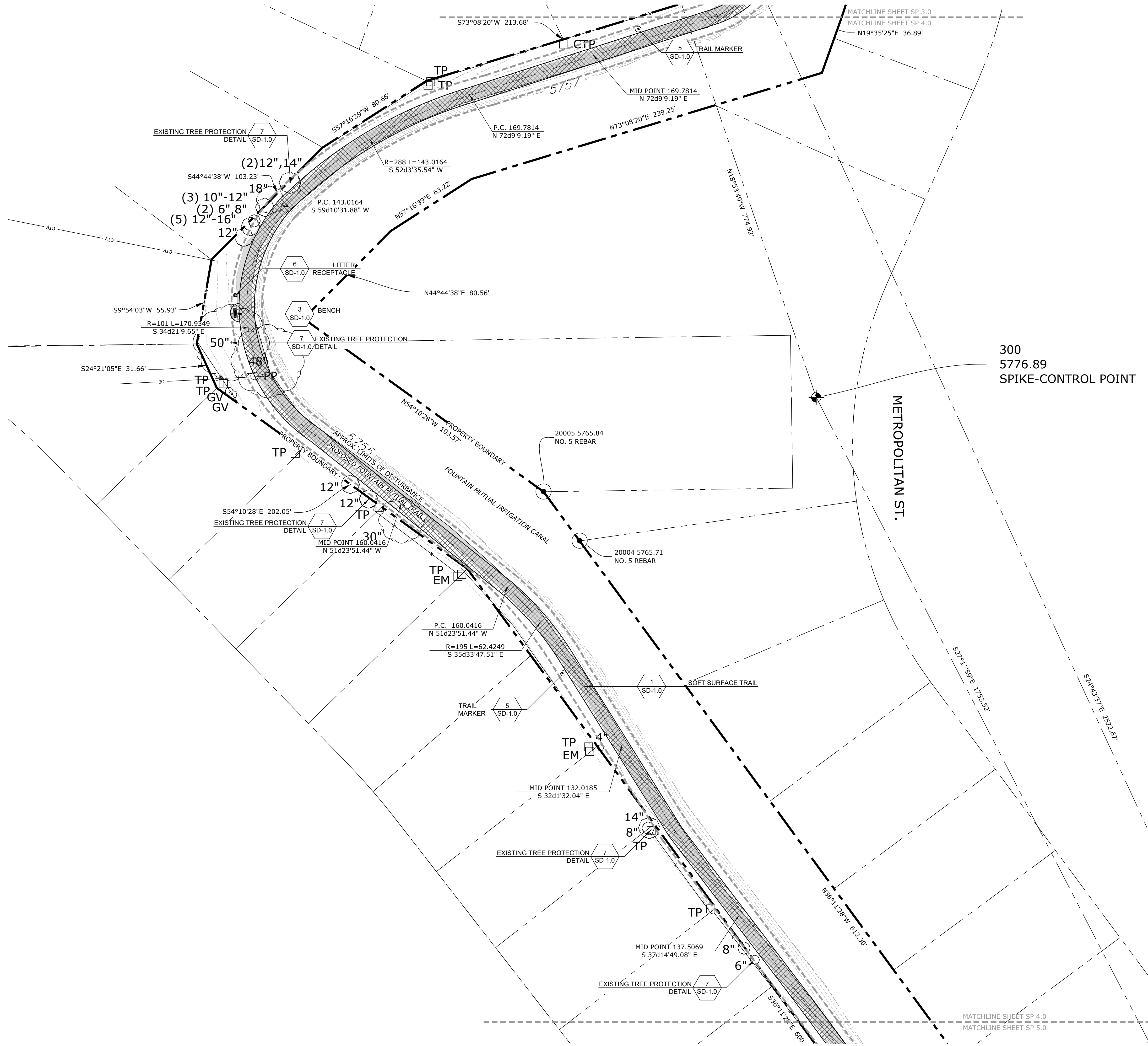
NOT FOR CONSTRUCTION

BID SET

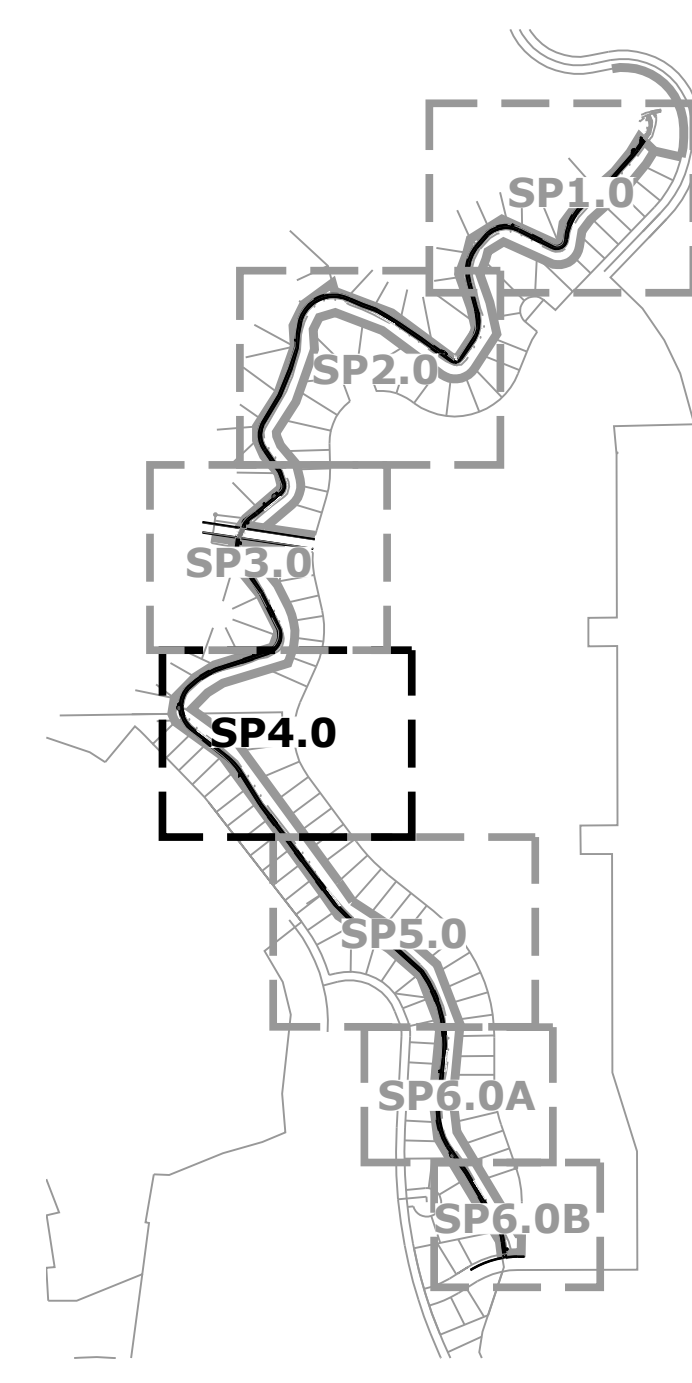
DATE	BY	DESCRIPTION

SITE PLAN

SP-3.0
4 OF 8

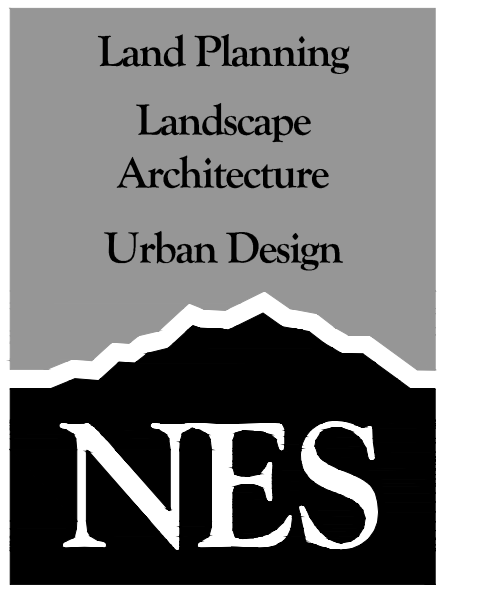


SHEET KEY MAP



KEY NOTE SCHEDULE

NUMBER	TITLE
1/SD-1.0	SOFT SURFACE TRAIL
2/SD-1.0	10 FT. RAMP
3/SD-1.0	BENCH
4/SD-1.0	KIOSK SIGN
5/SD-1.0	TRAIL MARKER
6/SD-1.0	LITTER RECEPTACLE
7/SD-1.0	EXISTING TREE PROTECTION DETAIL



N.E.S. Inc.
619 N. Cascade Avenue, Suite 200
Colorado Springs, CO 80903
Tel. 719.471.0073
Fax 719.471.0267
www.nescolorado.com
© 2012. All Rights Reserved.

**FOUNTAIN
MUTUAL
TRAIL**
REACH E
CONSTRUCTION
DOCUMENTS
WIDEFIELD, CO

DATE: 10.20.2020
PROJECT MGR: C. LIEBER
PREPARED BY: B. ITEN

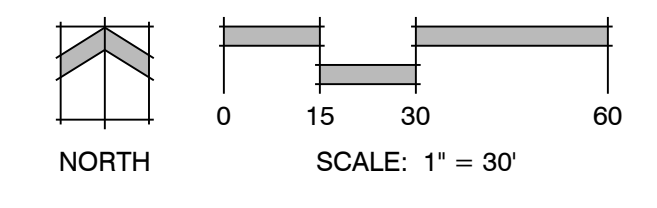
**NOT FOR
CONSTRUCTION**

BID SET

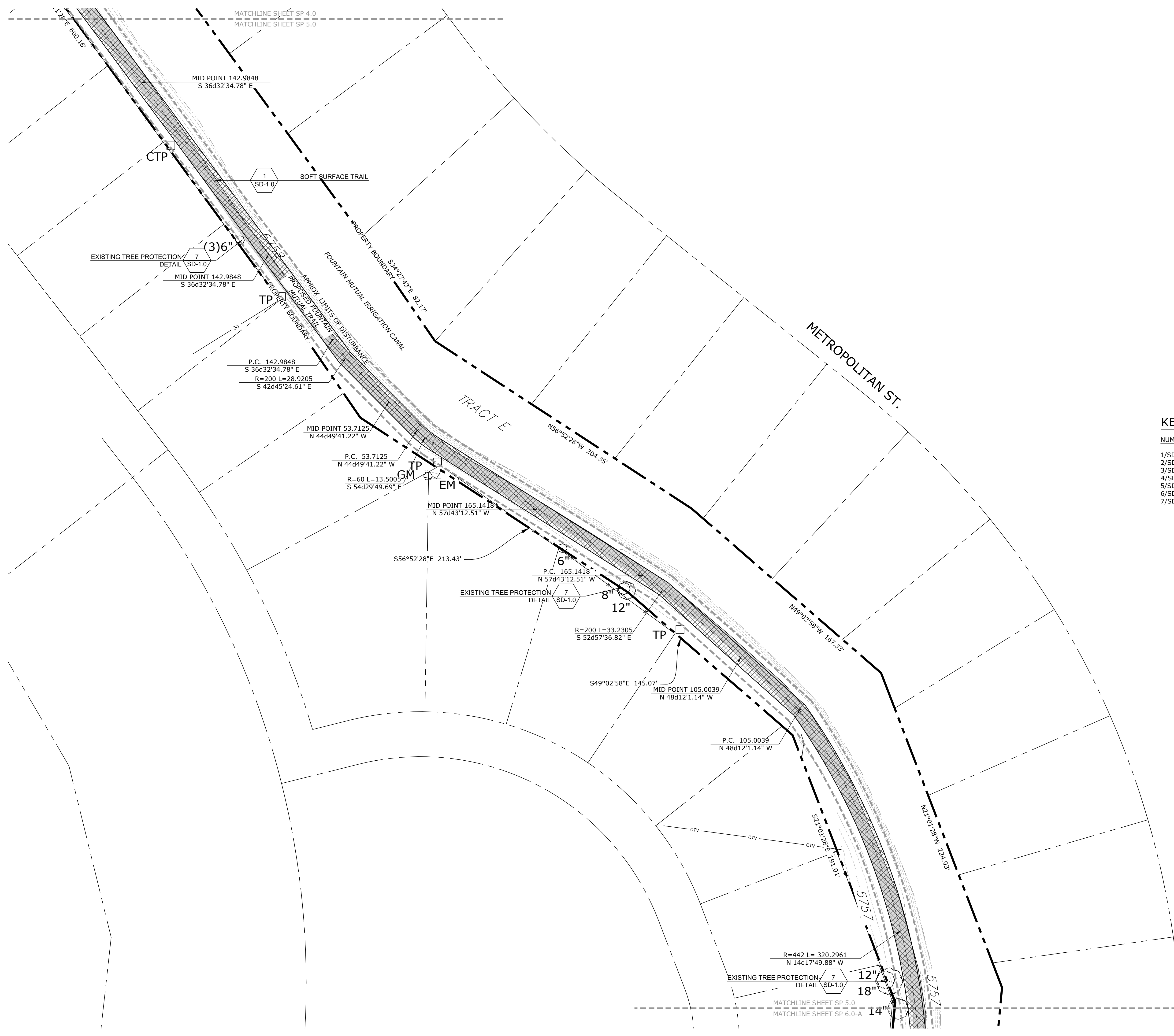
DATE	BY	DESCRIPTION

SITE PLAN

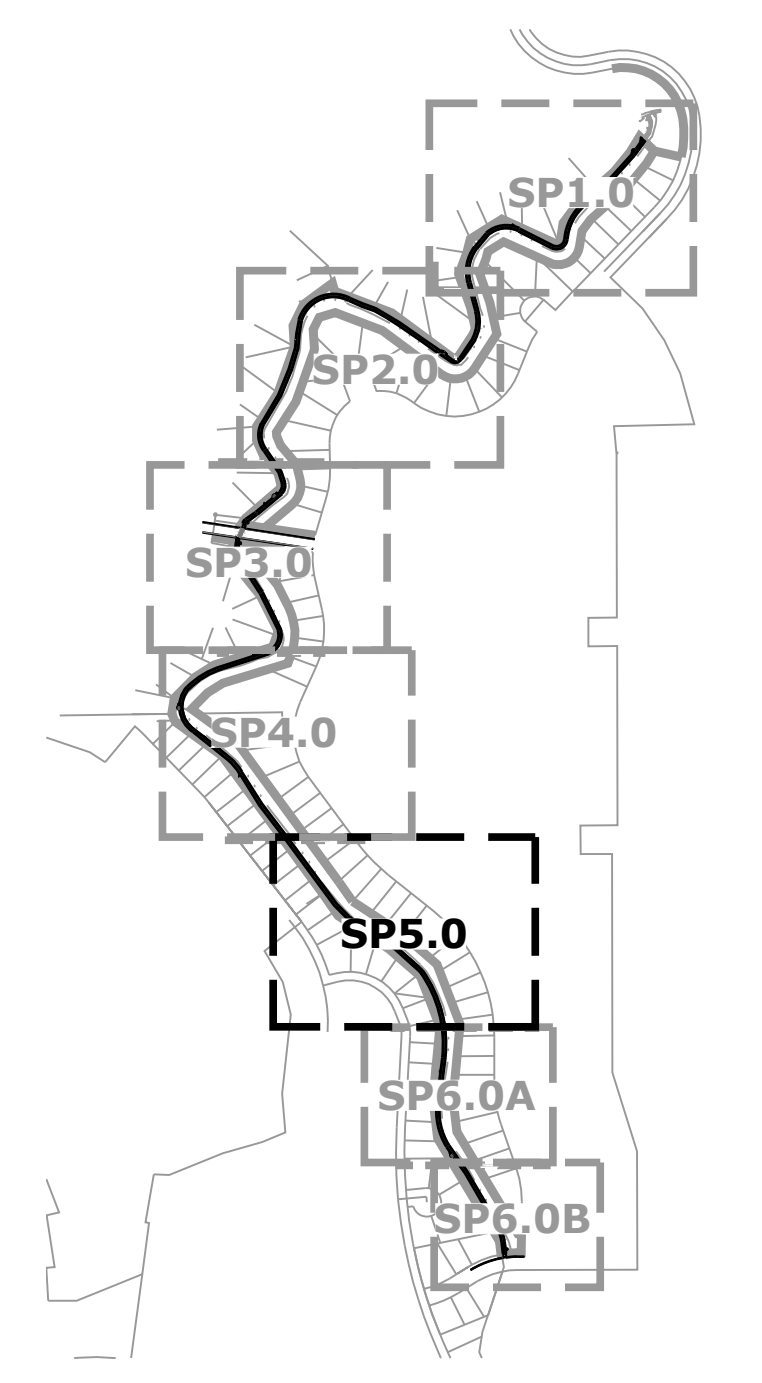
SP-4.0
5 OF 8



P:\PHOTO\PHOTO\PHOTO Trail Master Plan\Drawings\Reach E Trail CDS.dwg [SP 4.0] 10/20/2020 7:28:41 AM biten

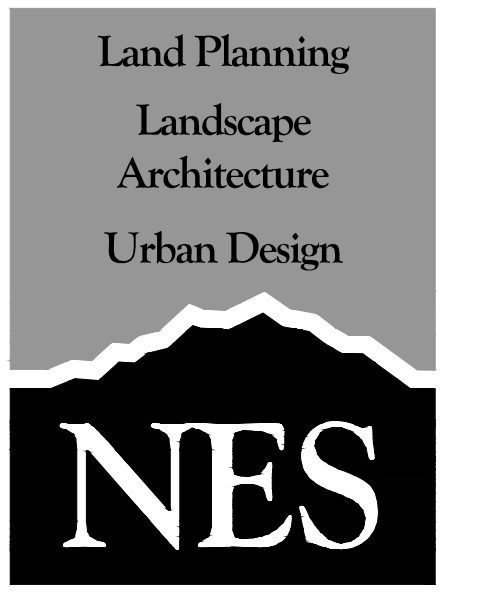


SHEET KEY MAP



KEY NOTE SCHEDULE

NUMBER	TITLE
1/SD-1.0	SOFT SURFACE TRAIL
2/SD-1.0	10 FT. RAMP
3/SD-1.0	BENCH
4/SD-1.0	KIOSK SIGN
5/SD-1.0	TRAIL MARKER
6/SD-1.0	LITTER RECEPTACLE
7/SD-1.0	EXISTING TREE PROTECTION DETAIL



N.E.S. Inc.
619 N. Cascade Avenue, Suite 200
Colorado Springs, CO 80903
Tel. 719.471.0073
Fax 719.471.0267
www.nescolorado.com
© 2012. All Rights Reserved.

**FOUNTAIN
MUTUAL
TRAIL**
REACH E
CONSTRUCTION
DOCUMENTS
WIDEFIELD, CO

DATE: 10.20.2020
PROJECT MGR: C. LIEBER
PREPARED BY: B. ITEN

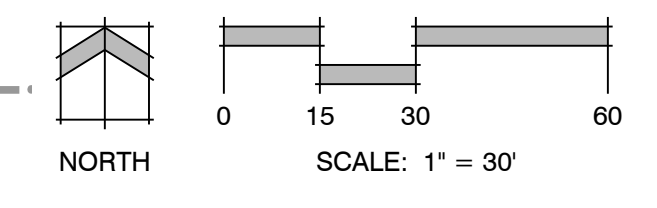
**NOT FOR
CONSTRUCTION**

BID SET

DATE	BY	DESCRIPTION

SITE PLAN

SP-5.0
6 OF 8

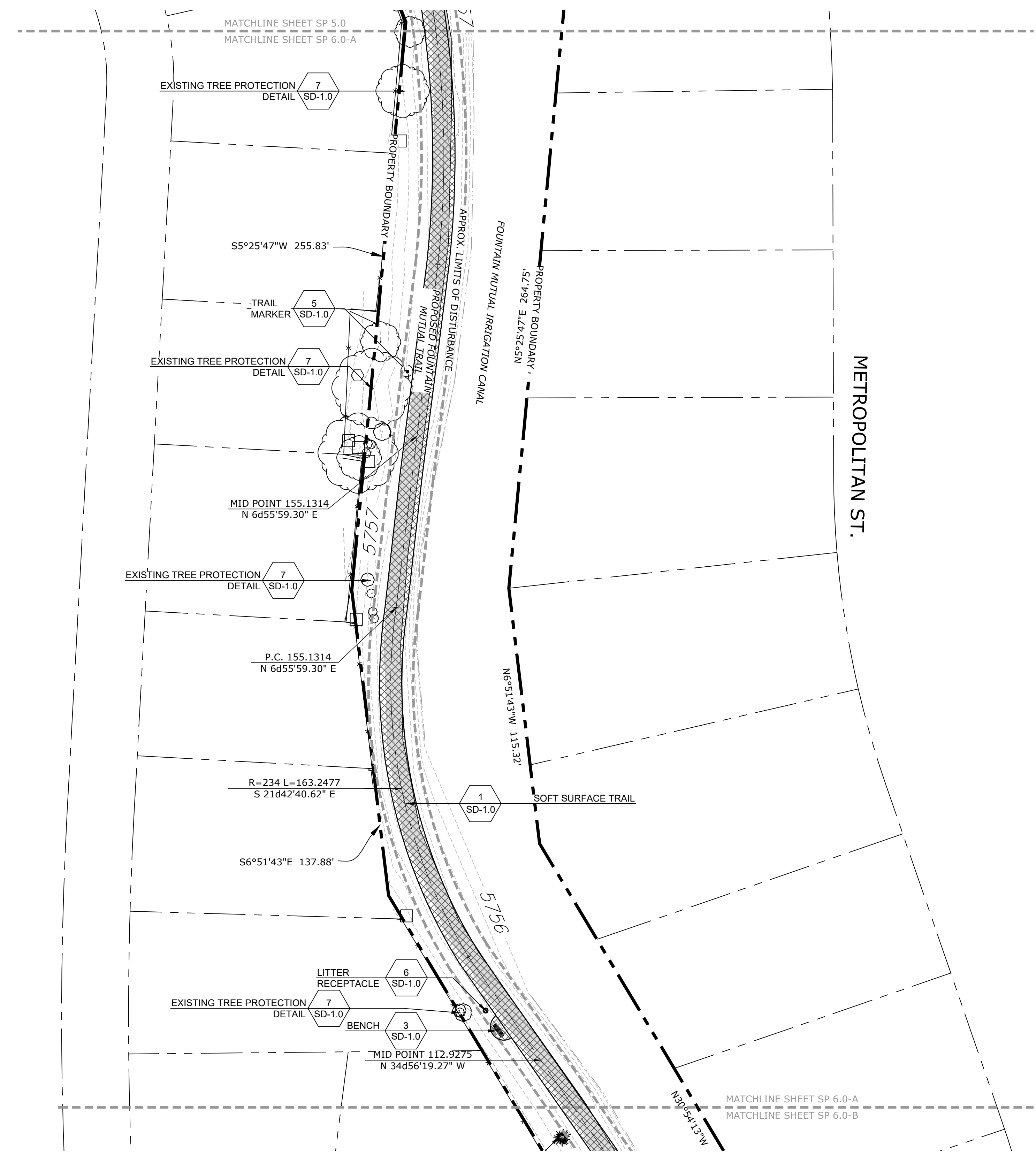
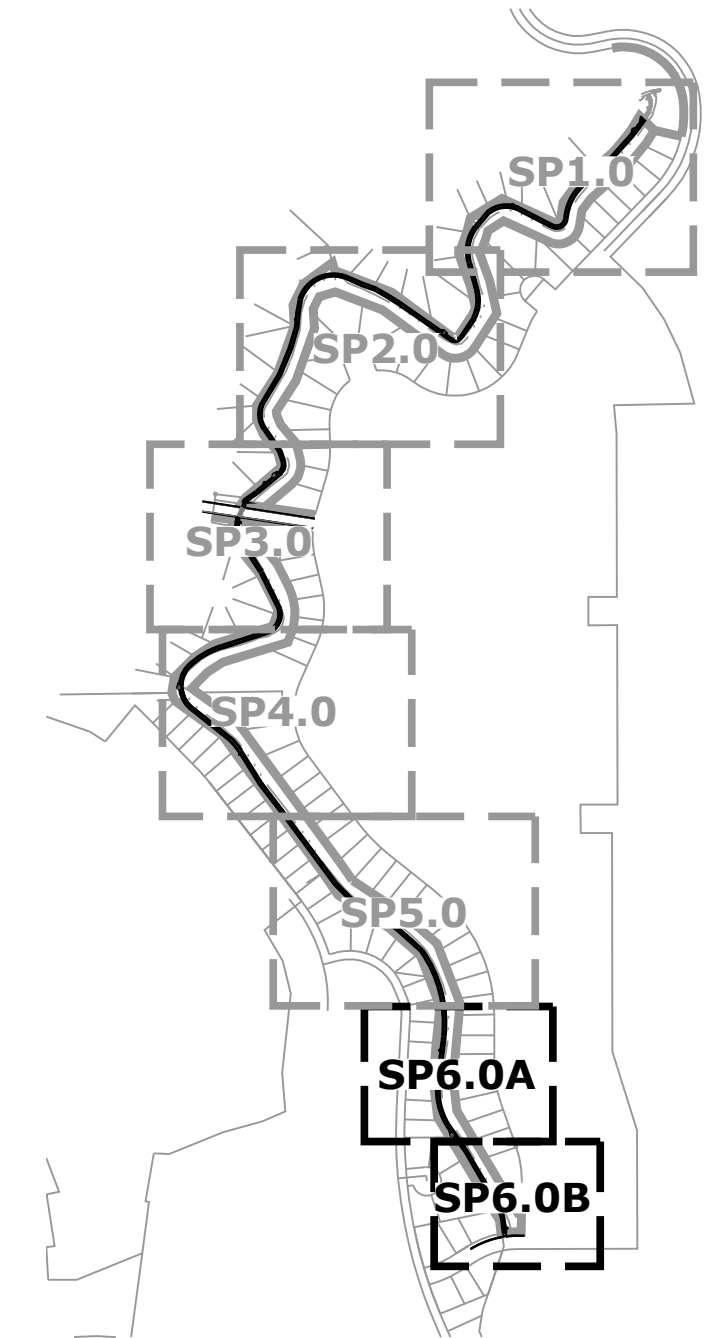


P:\PHOTO\PHOTO\PHOTO Trail Master Plan\Drawings\4.0\Trail CDs\SP5 Trail CDs.dwg [SP 5.0] 10/20/2020 7:30:10 AM biten

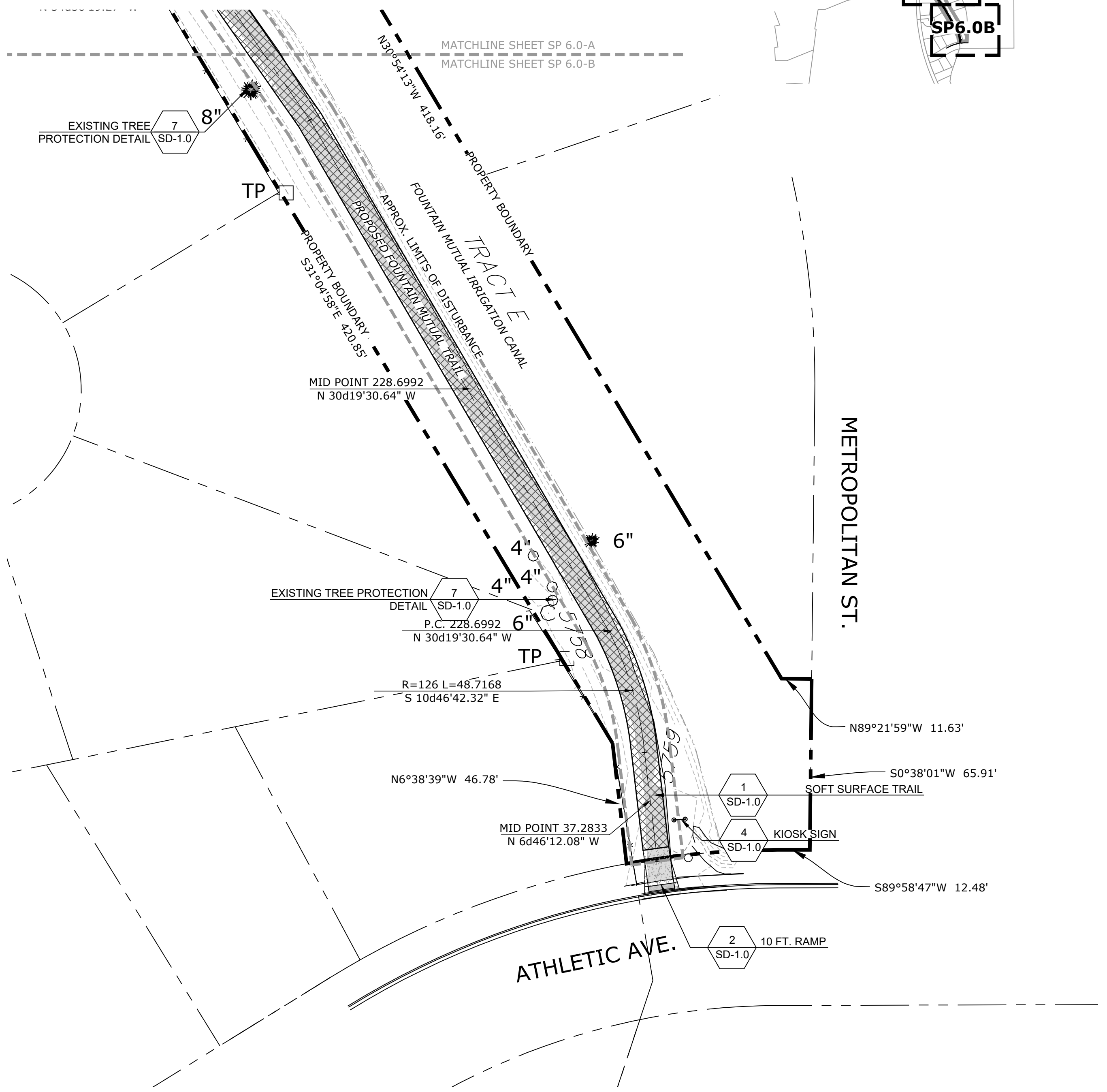
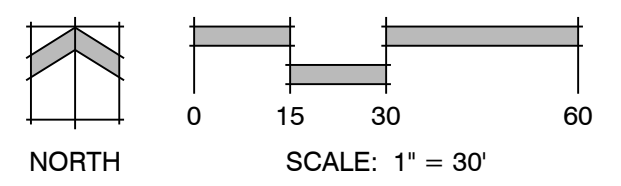
KEY NOTE SCHEDULE

NUMBER	TITLE
1/SD-1.0	SOFT SURFACE TRAIL
2/SD-1.0	10 FT. RAMP
3/SD-1.0	BENCH
4/SD-1.0	KIOSK SIGN
5/SD-1.0	TRAIL MARKER
6/SD-1.0	LITTER RECEPTACLE
7/SD-1.0	EXISTING TREE PROTECTION DETAIL

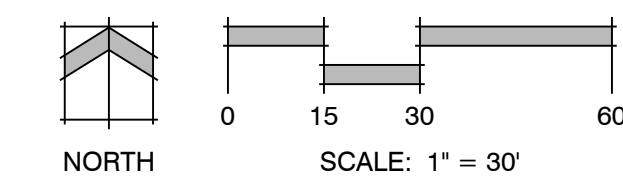
SHEET KEY MAP



A VIEWPORT A
SP-6.0



B VIEWPORT B
SP-6.0



**FOUNTAIN
MUTUAL
TRAIL**
REACH E
CONSTRUCTION
DOCUMENTS
WIDEFIELD, CO

DATE: 10.20.2020
PROJECT MGR: C. LIEBER
PREPARED BY: B. ITEN

**NOT FOR
CONSTRUCTION**

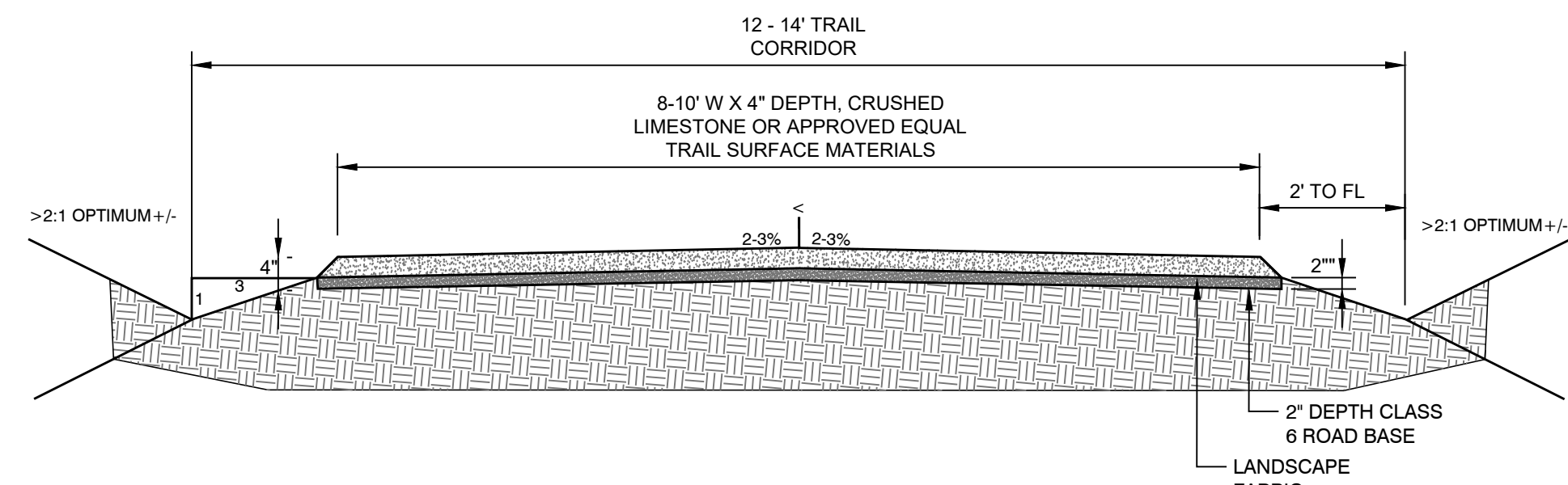
BID SET

DATE	BY	DESCRIPTION

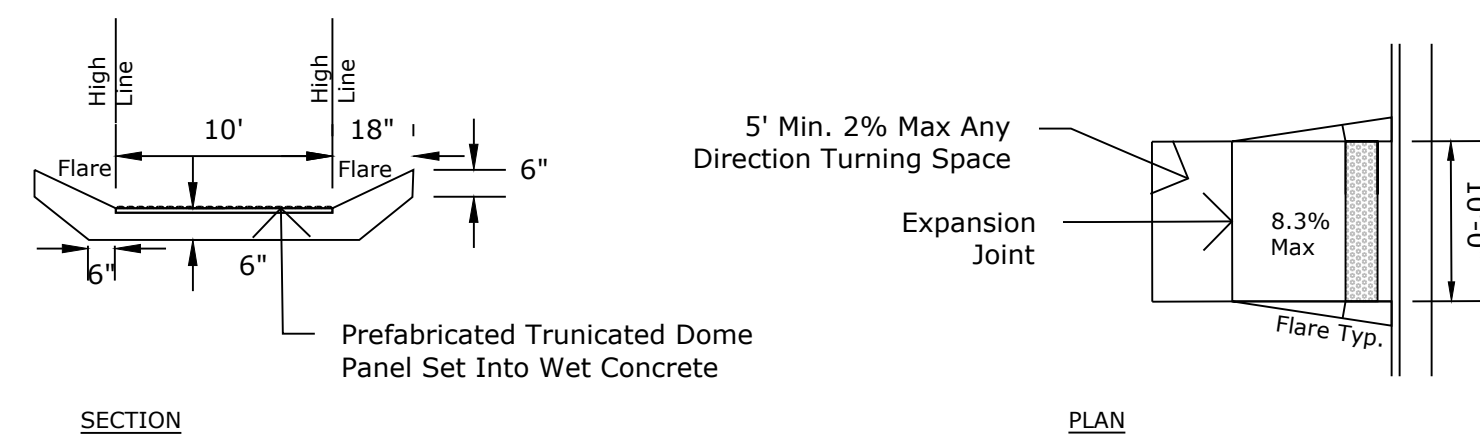
SITE PLAN

SP-6.0

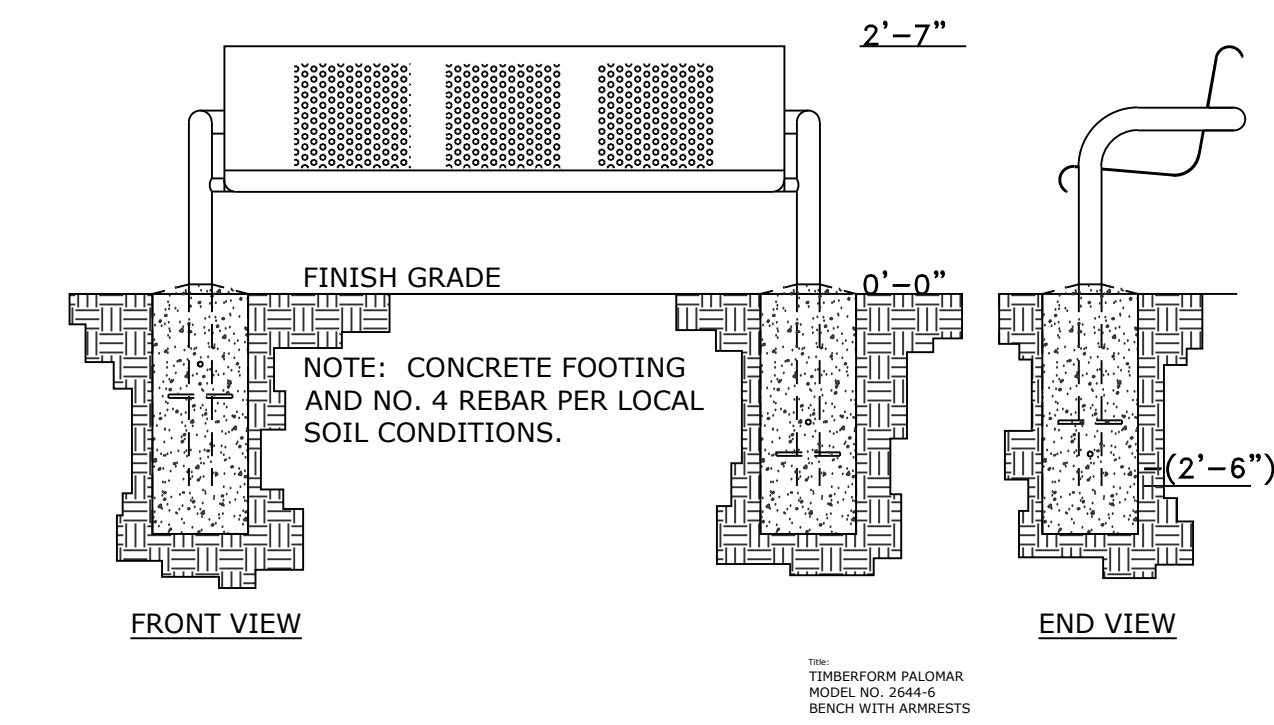
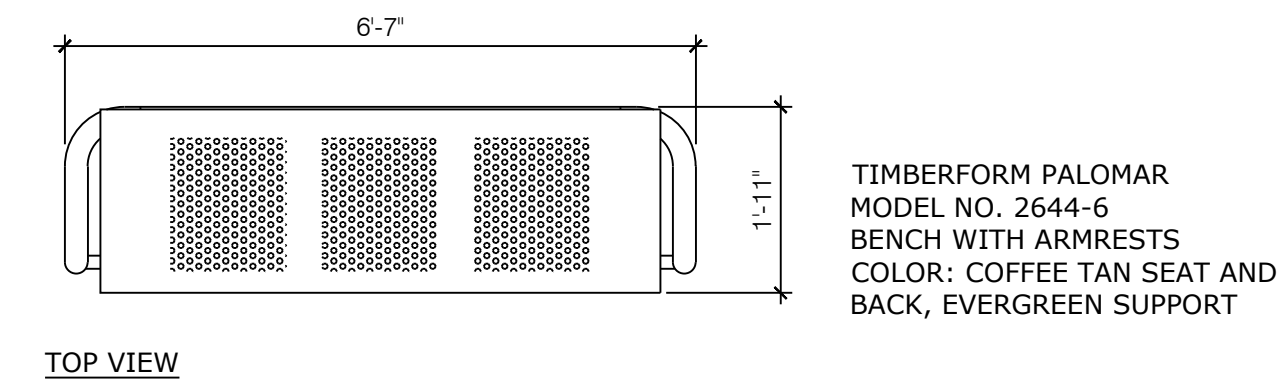
7 OF 8



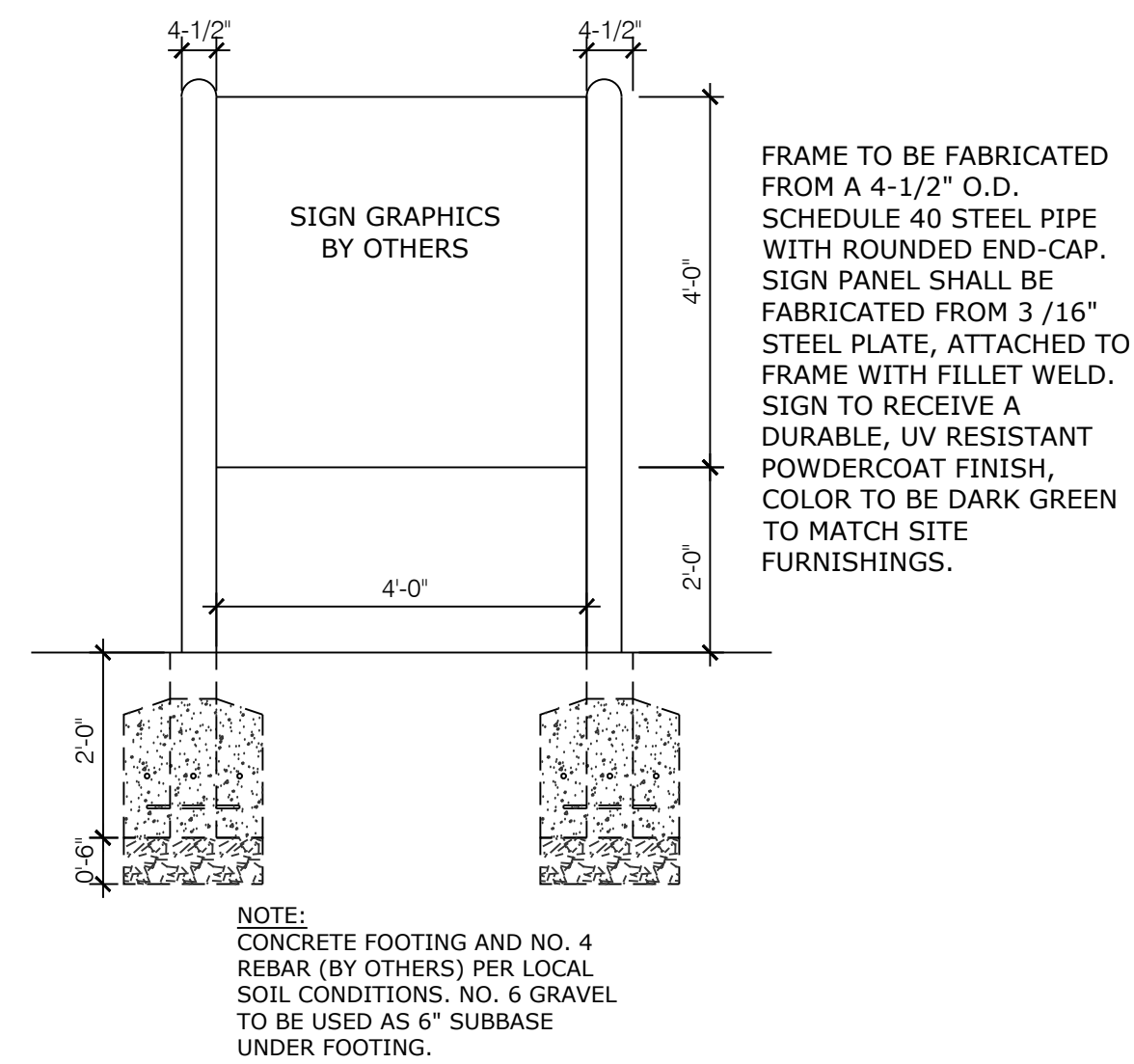
1 SOFT SURFACE TRAIL
N.T.S. P-FMT-09



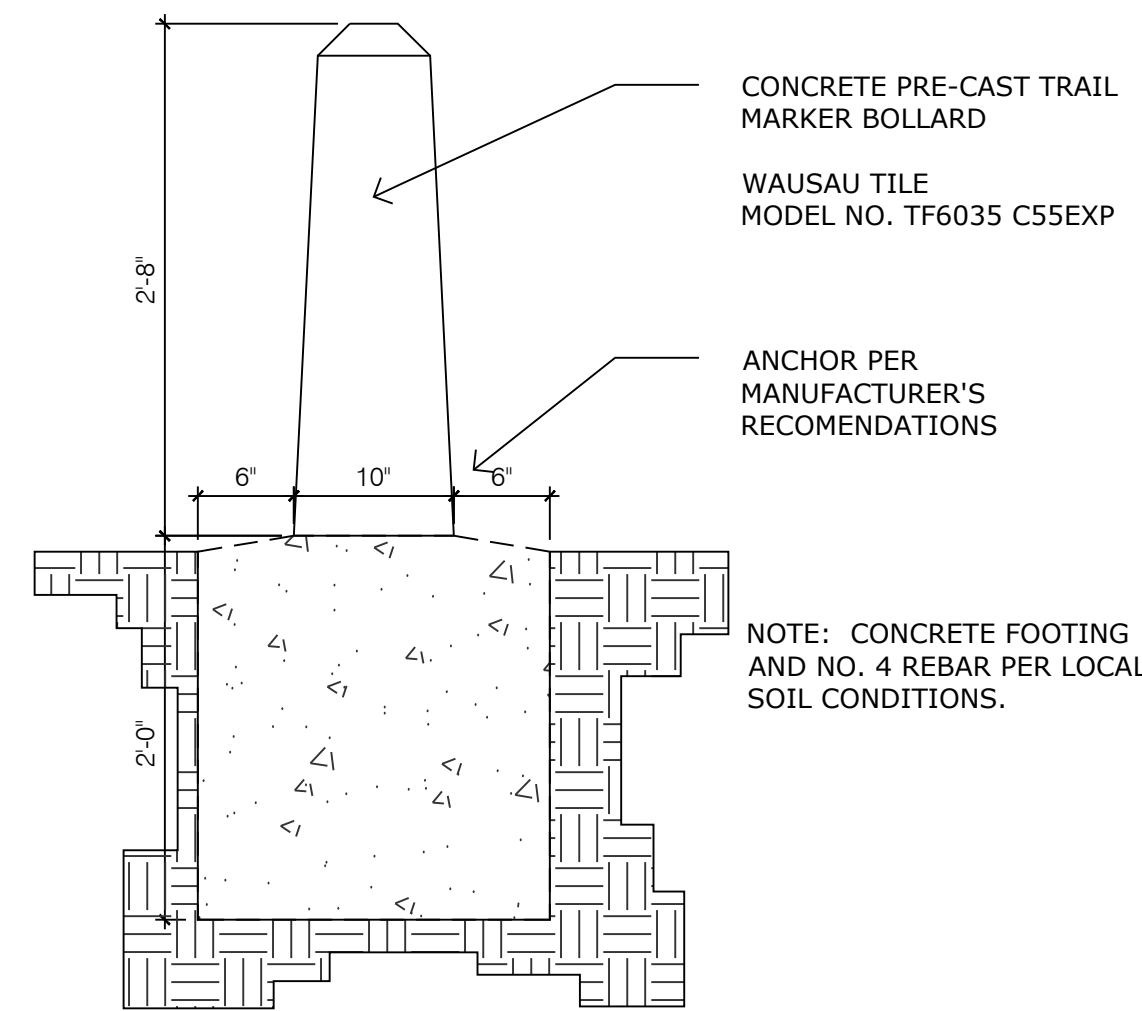
2 10 FT. RAMP
N.T.S. P-FMT-08



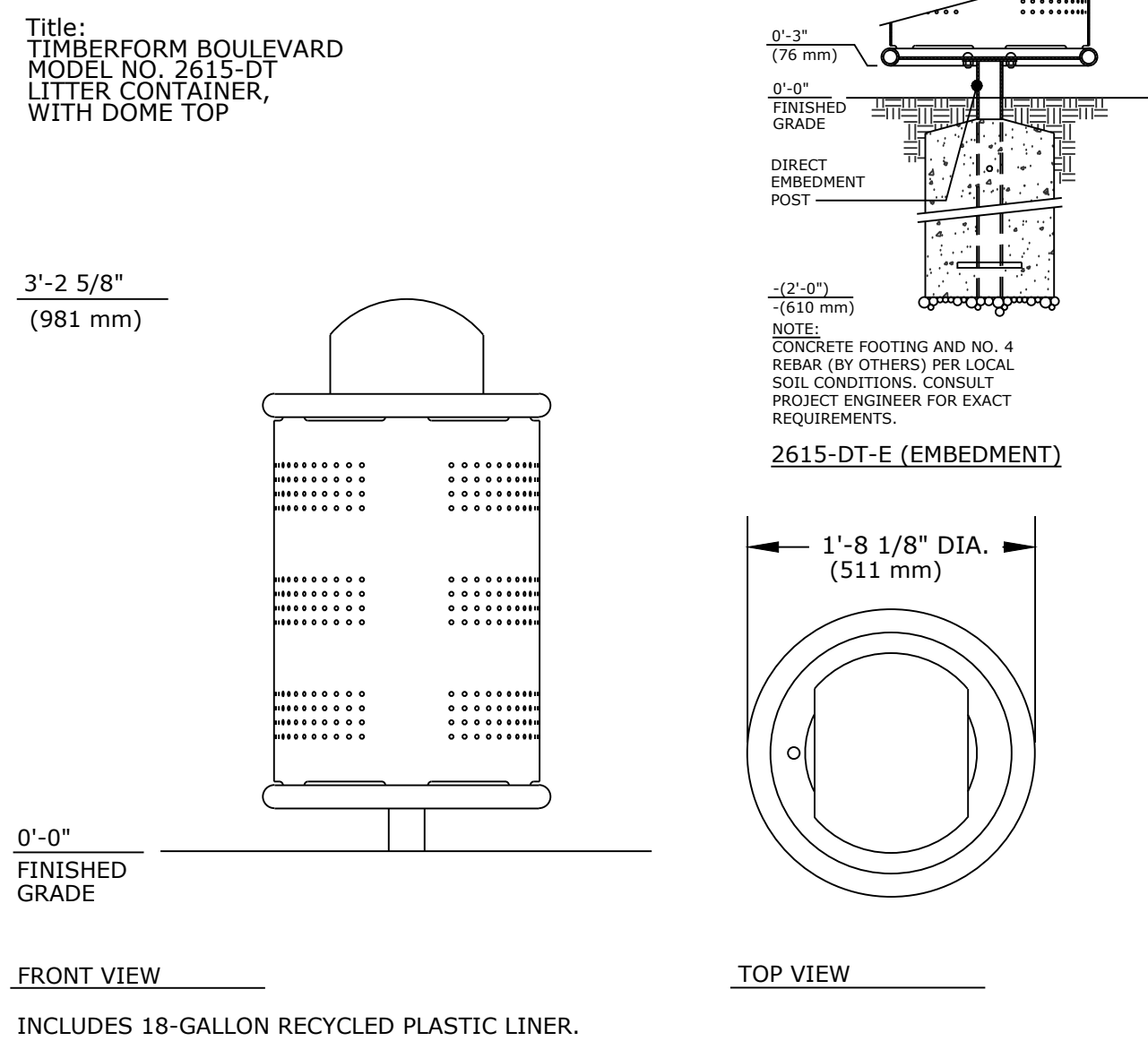
3 BENCH
N.T.S. P-FMT-06



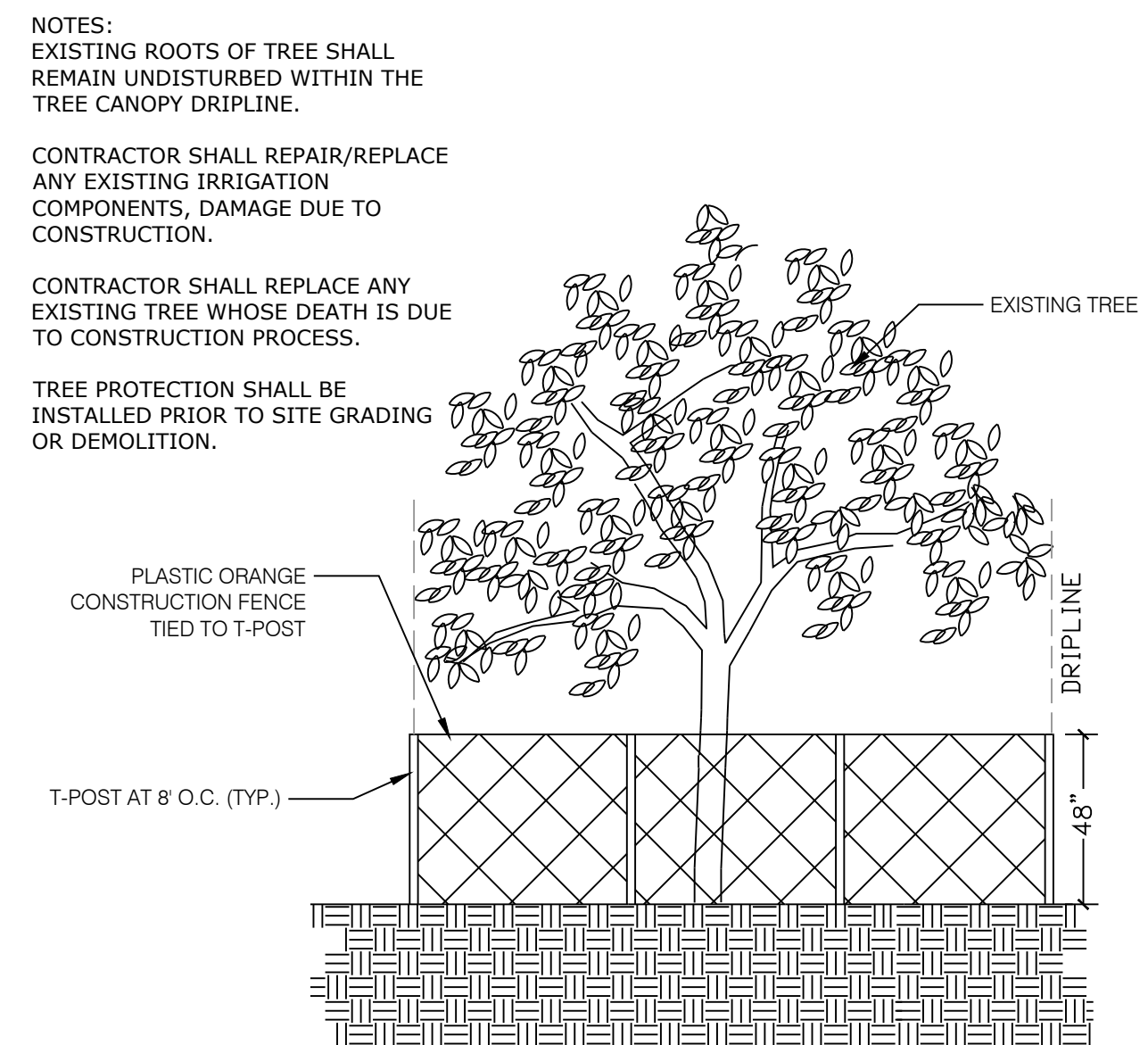
4 KIOSK SIGN
N.T.S. P-FMT-07



5 TRAIL MARKER
N.T.S. P-FMT-08



6 LITTER RECEPTACLE
N.T.S. P-FMT-10



7 EXISTING TREE PROTECTION DETAIL
N.T.S. NES-LS-11

**NOT FOR
CONSTRUCTION**

BID SET

DATE	BY	DESCRIPTION

DETAILS